

DISTRICTING CRPD

Draft Maps

March, 2022

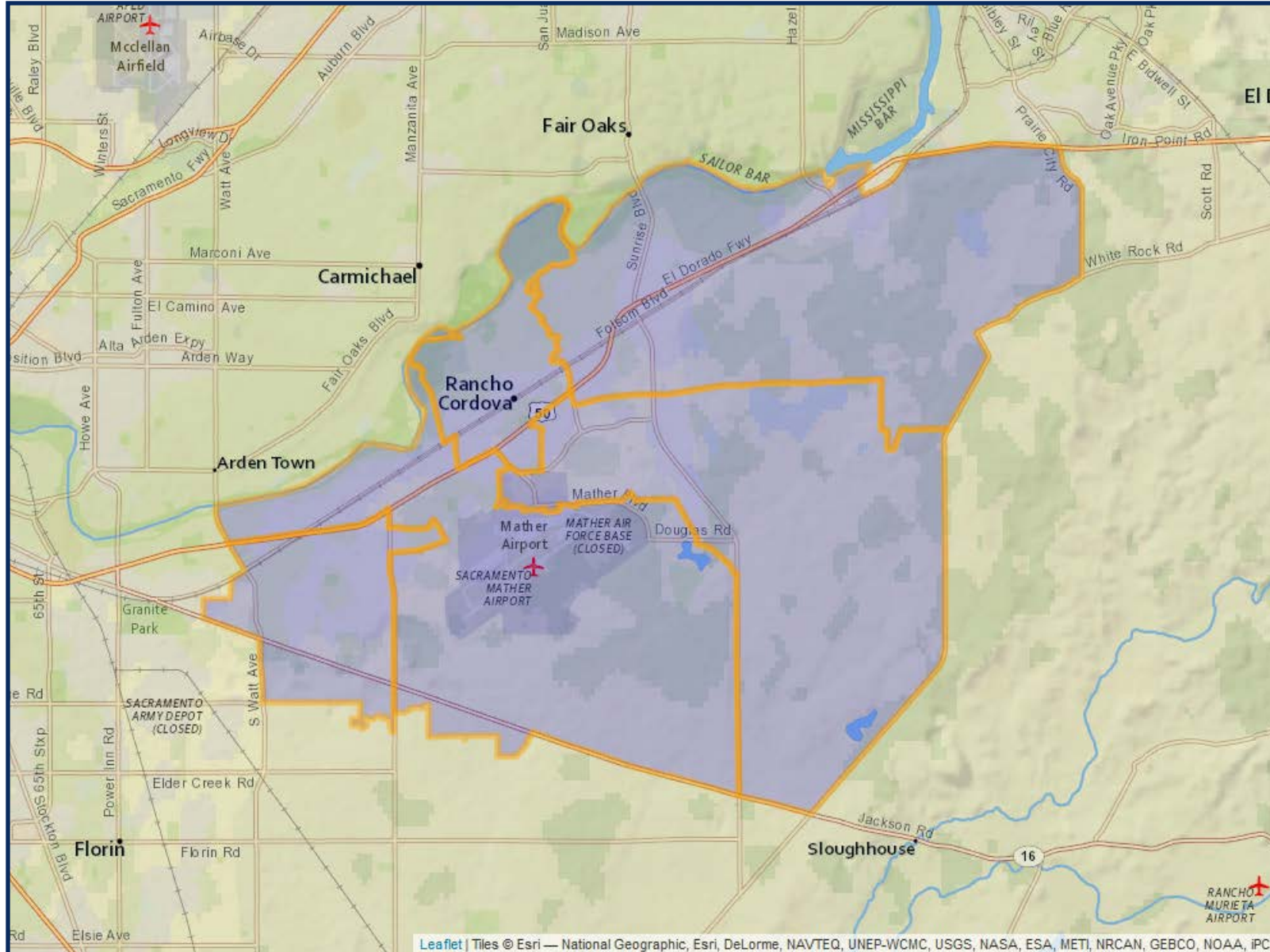
DISTRICTING CRPD DRAFT I - ADJUSTED

	DISTRICT 1	DISTRICT 2	DISTRICT 3	DISTRICT 4	DISTRICT 5
2020 Census Count*	25,823	25,332	25,696	25,832	25,318
Deviation #	223	-268	96	232	-282
Deviation %	0.9%	-1.0%	0.4%	0.9%	-1.1%
2010 Census Count	24,613	24,025	15,118	23,698	23,515
2019 CVAP*	18,865	17,562	13,507	15,958	17,518
2010 CVAP	16,520	16,020	8,215	13,777	16,555

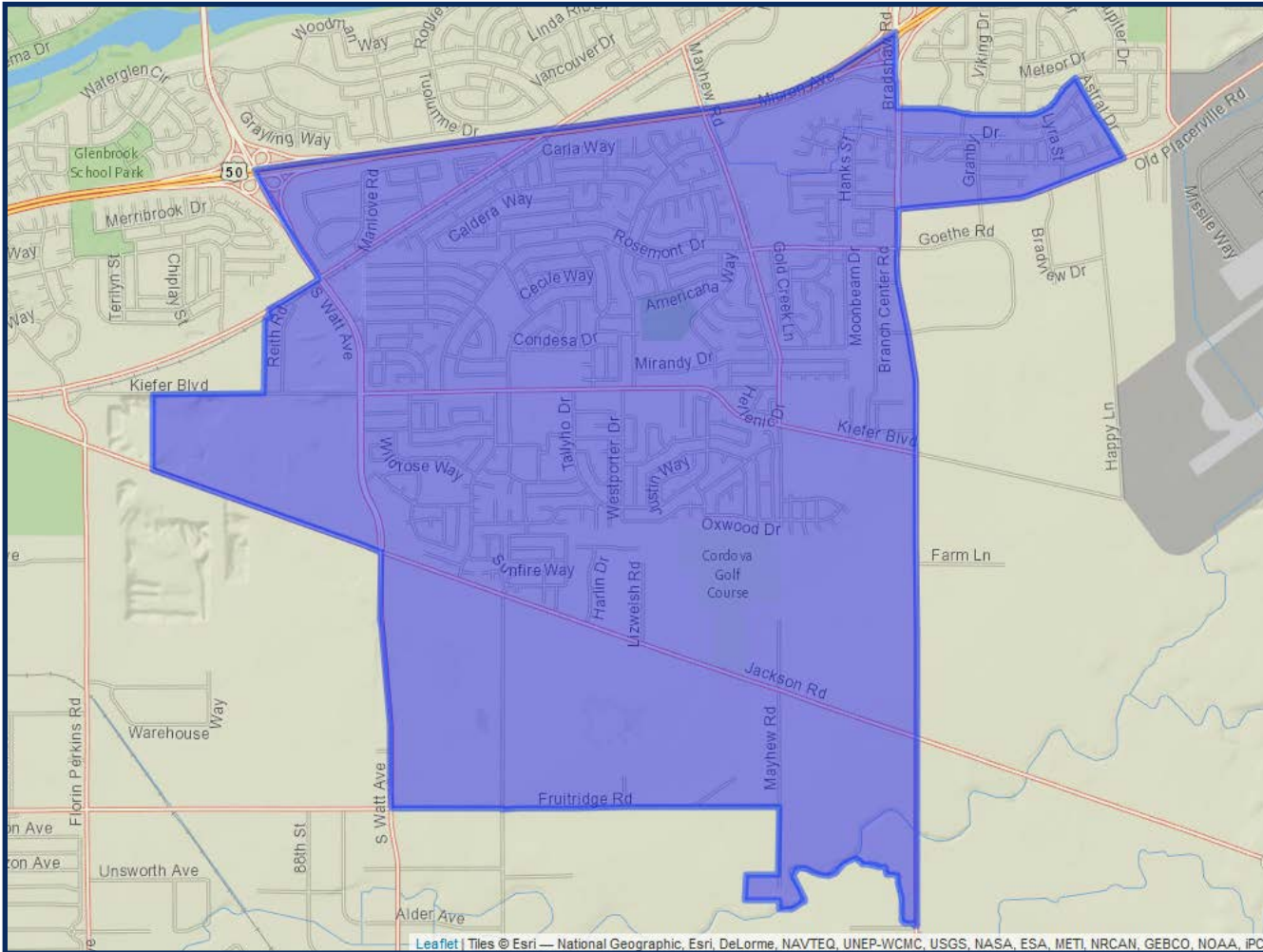


**Adjusted for prisoner reallocation*

DISTRICTING CRPD DRAFT I - ADJUSTED



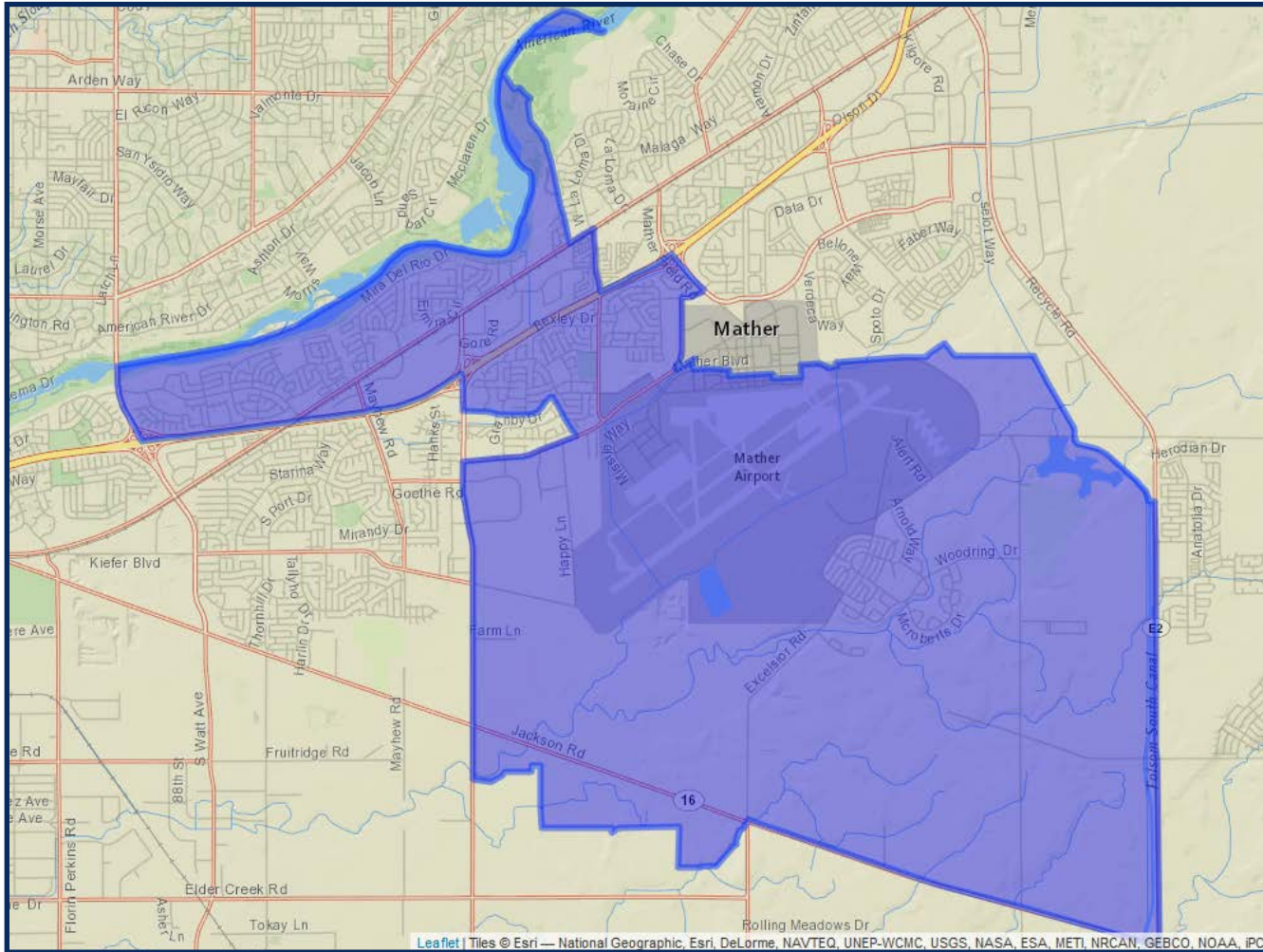
DISTRICT 1



	2020 Count*	2019 CVAP*
Total	25,823	18,865
White	43.81%	51.86%
Black	11.64%	12.22%
Asian	11.37%	11.52%
Hispanic	24.02%	17.37%

DISTRICTING CRPD DRAFT I - ADJUSTED

DISTRICT 2

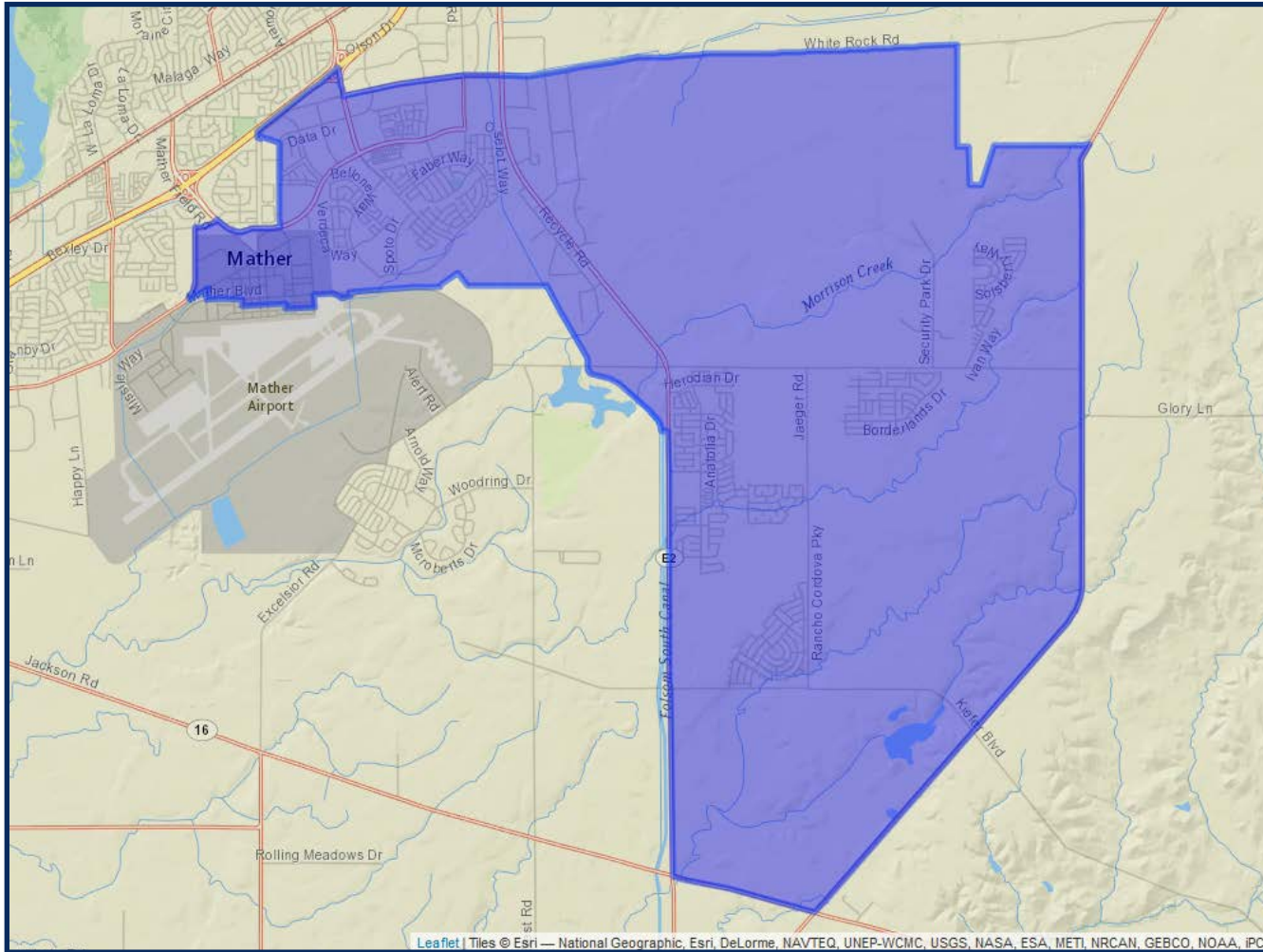


	2020 Count*	2019 CVAP*
Total	25,332	17,562
White	48.74%	51.10%
Black	9.43%	11.73%
Asian	10.59%	11.78%
Hispanic	21.54%	19.38%



*Adjusted for prisoner reallocation

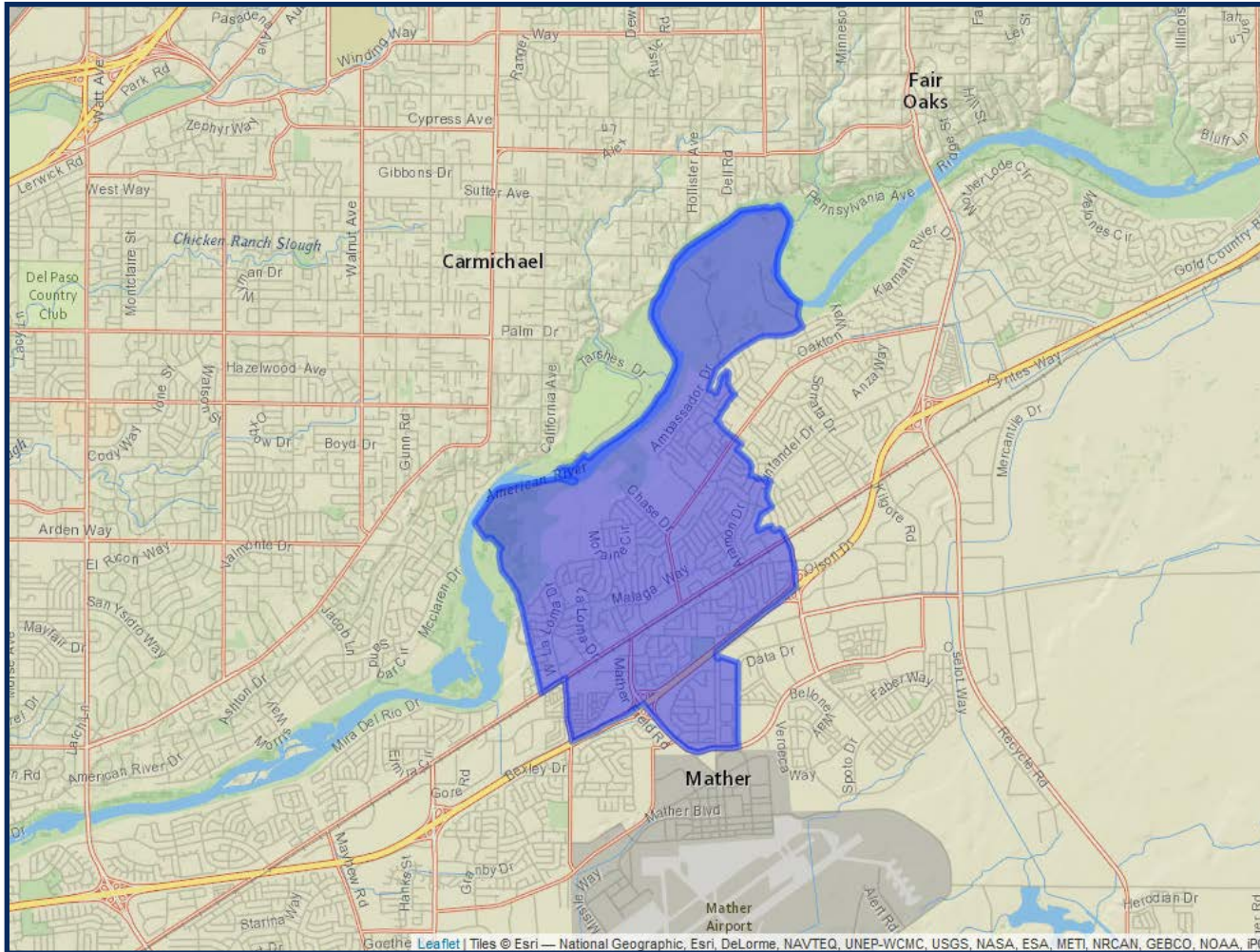
DISTRICT 3



	2020 Count*	2019 CVAP*
Total	25,696	13,507
White	40.66%	47.65%
Black	7.44%	9.44%
Asian	28.61%	25.62%
Hispanic	13.66%	12.09%

DISTRICTING CRPD DRAFT I - ADJUSTED

DISTRICT 4

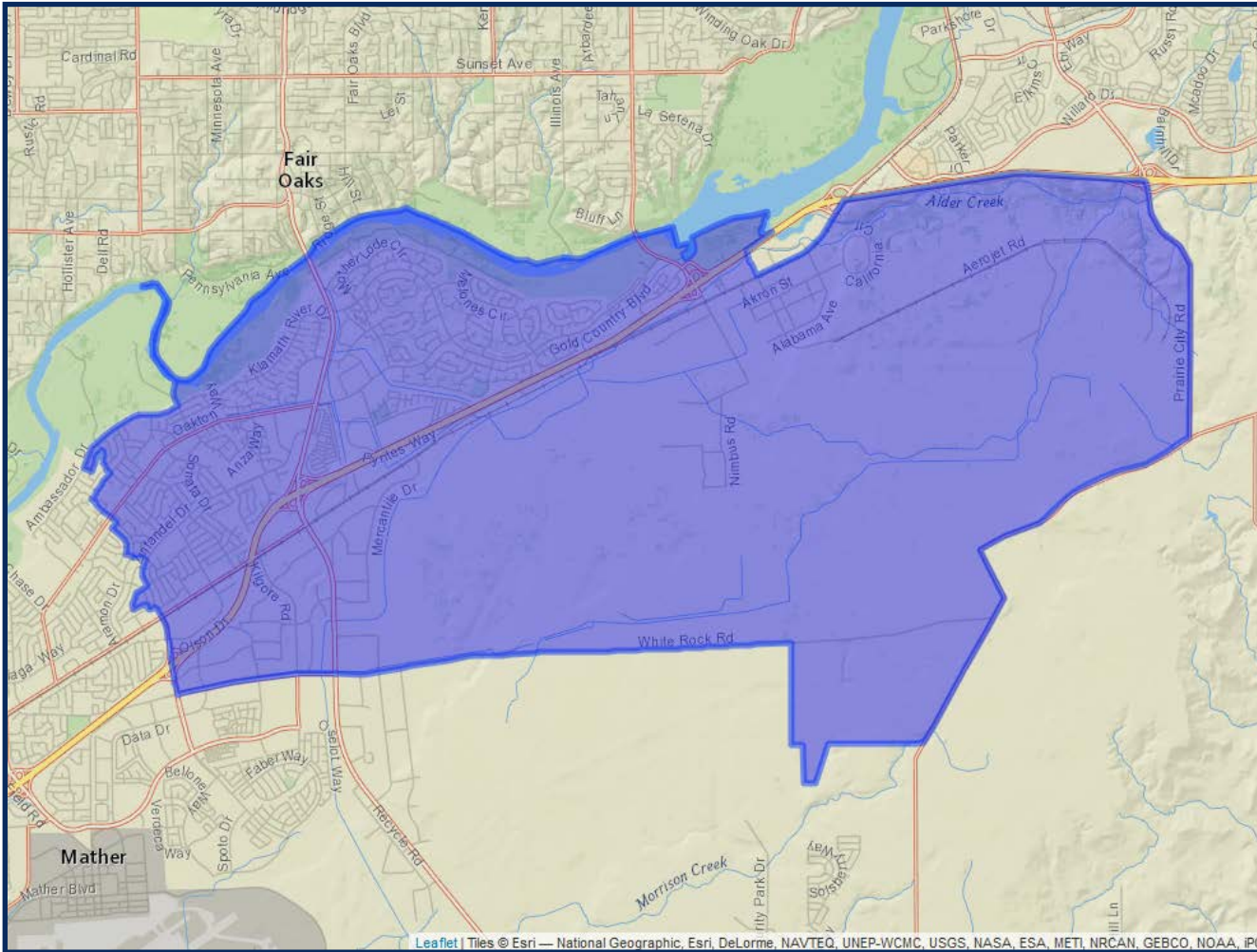


	2020 Count*	2019 CVAP*
Total	25,832	15,958
White	42.66%	58.53%
Black	11.48%	11.99%
Asian	8.71%	4.74%
Hispanic	27.35%	18.40%



*Adjusted for prisoner reallocation

DISTRICT 5



	2020 Count*	2019 CVAP*
Total	25,318	17,518
White	56.13%	67.75%
Black	5.69%	5.25%
Asian	11.42%	10.22%
Hispanic	18.48%	11.76%

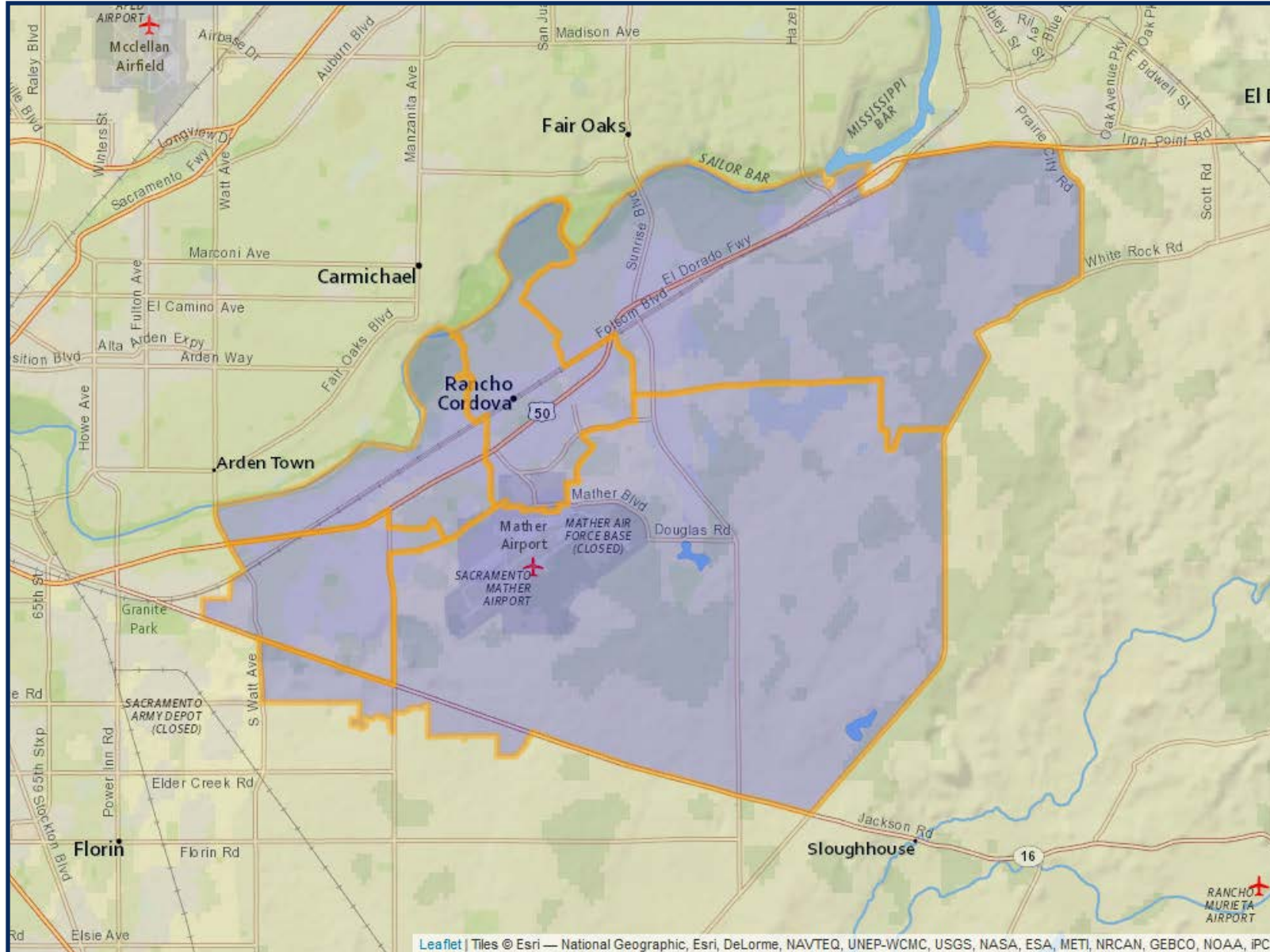
DISTRICTING CRPD DRAFT 2 - ADJUSTED

	DISTRICT 1	DISTRICT 2	DISTRICT 3	DISTRICT 4	DISTRICT 5
2020 Census Count*	24,974	25,714	25,913	26,124	25,276
Deviation #	-626	114	313	524	-324
Deviation %	-2.4%	0.4%	1.2%	2.0%	-1.3%
2010 Census Count	15,406	24,543	24,216	23,301	23,503
2019 CVAP*	13,211	18,803	17,997	15,955	17,444
2010 CVAP	9,003	16,465	15,593	13,459	16,567

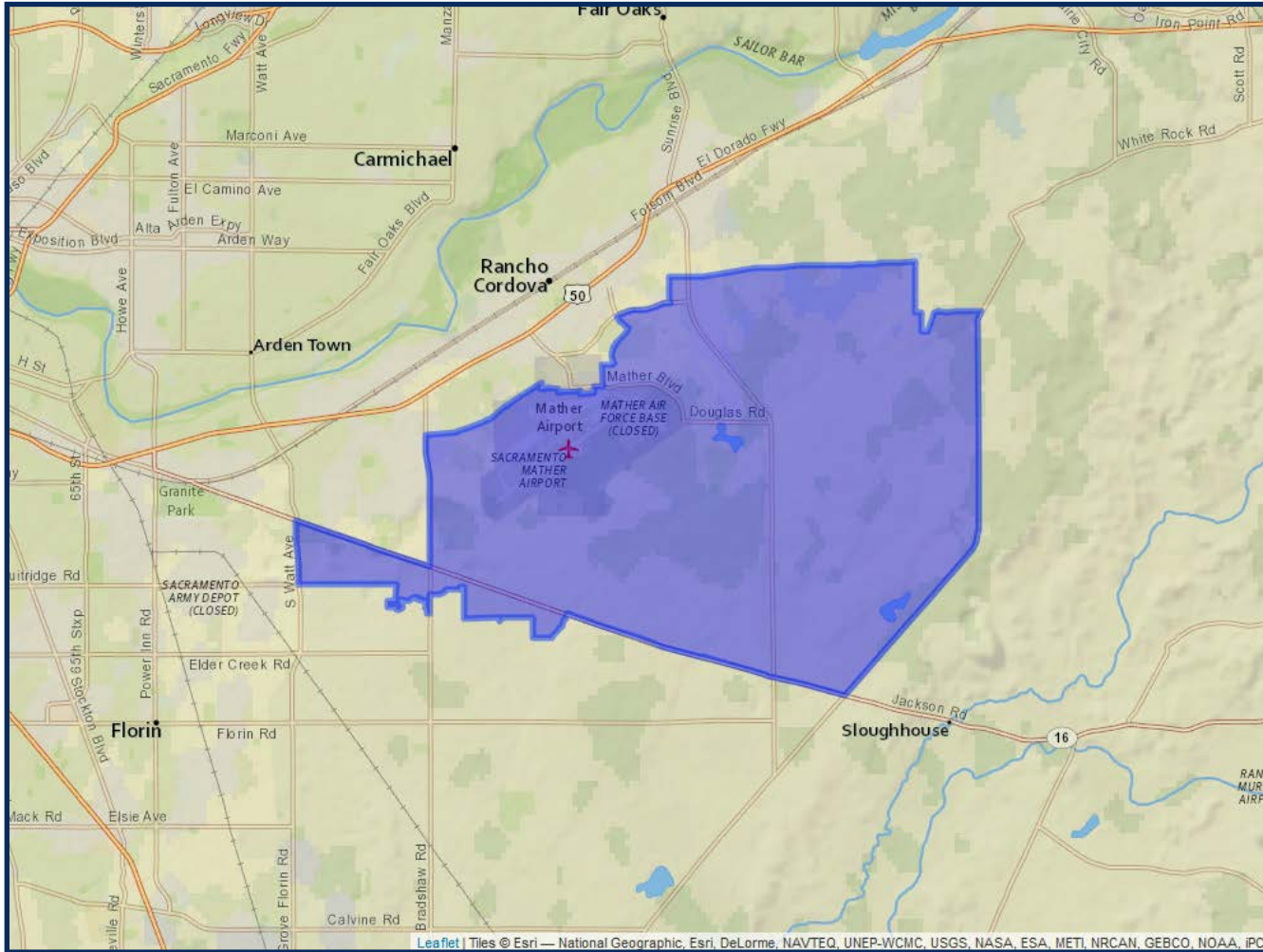


**Adjusted for prisoner reallocation*

DISTRICTING CRPD DRAFT 2 - ADJUSTED



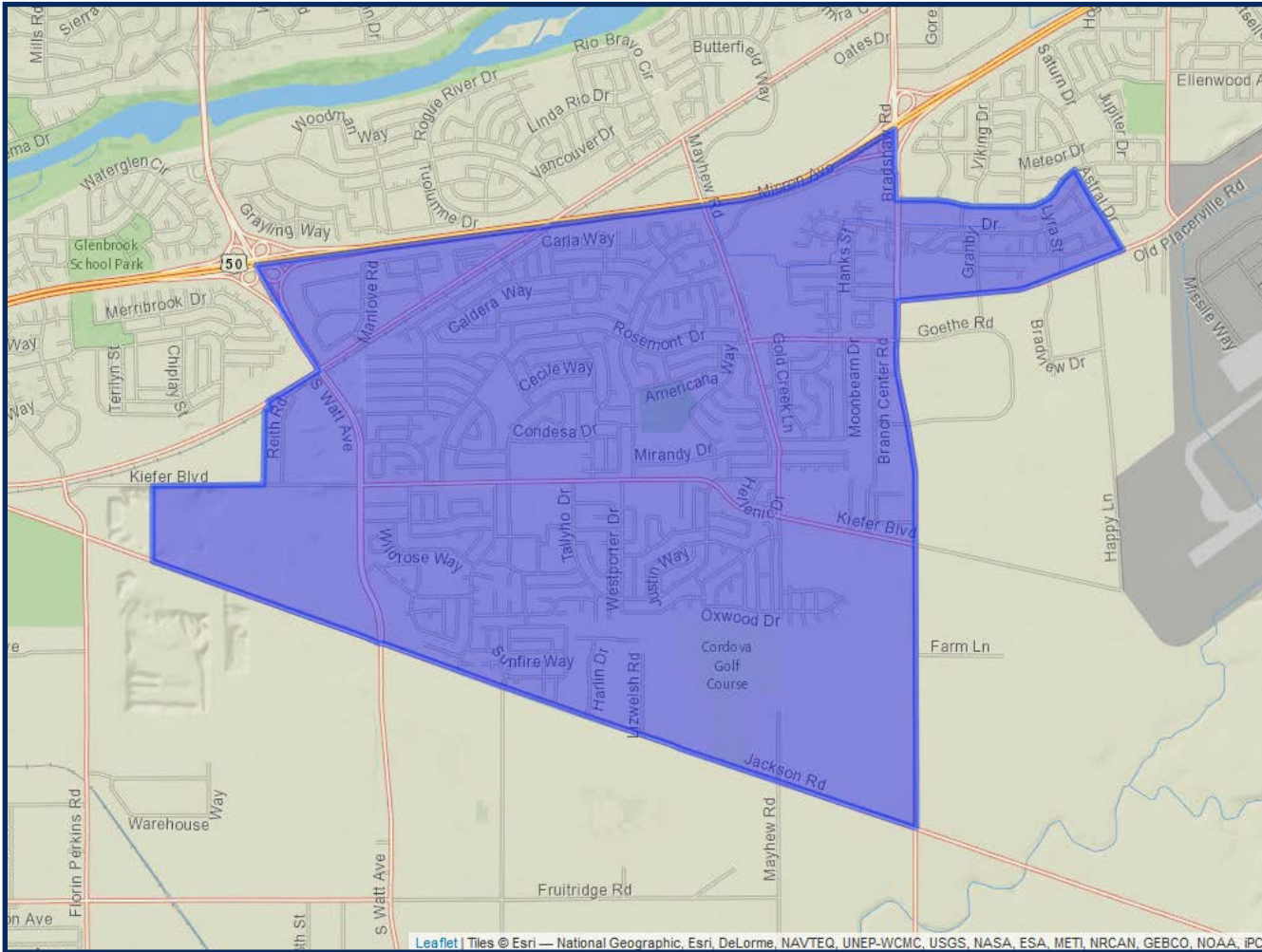
DISTRICT 1



	2020 Count*	2019 CVAP*
Total	24,974	13,211
White	41.67%	49.39%
Black	6.74%	8.46%
Asian	27.61%	25.03%
Hispanic	14.44%	12.29%

DISTRICTING CRPD DRAFT 2 - ADJUSTED

DISTRICT 2

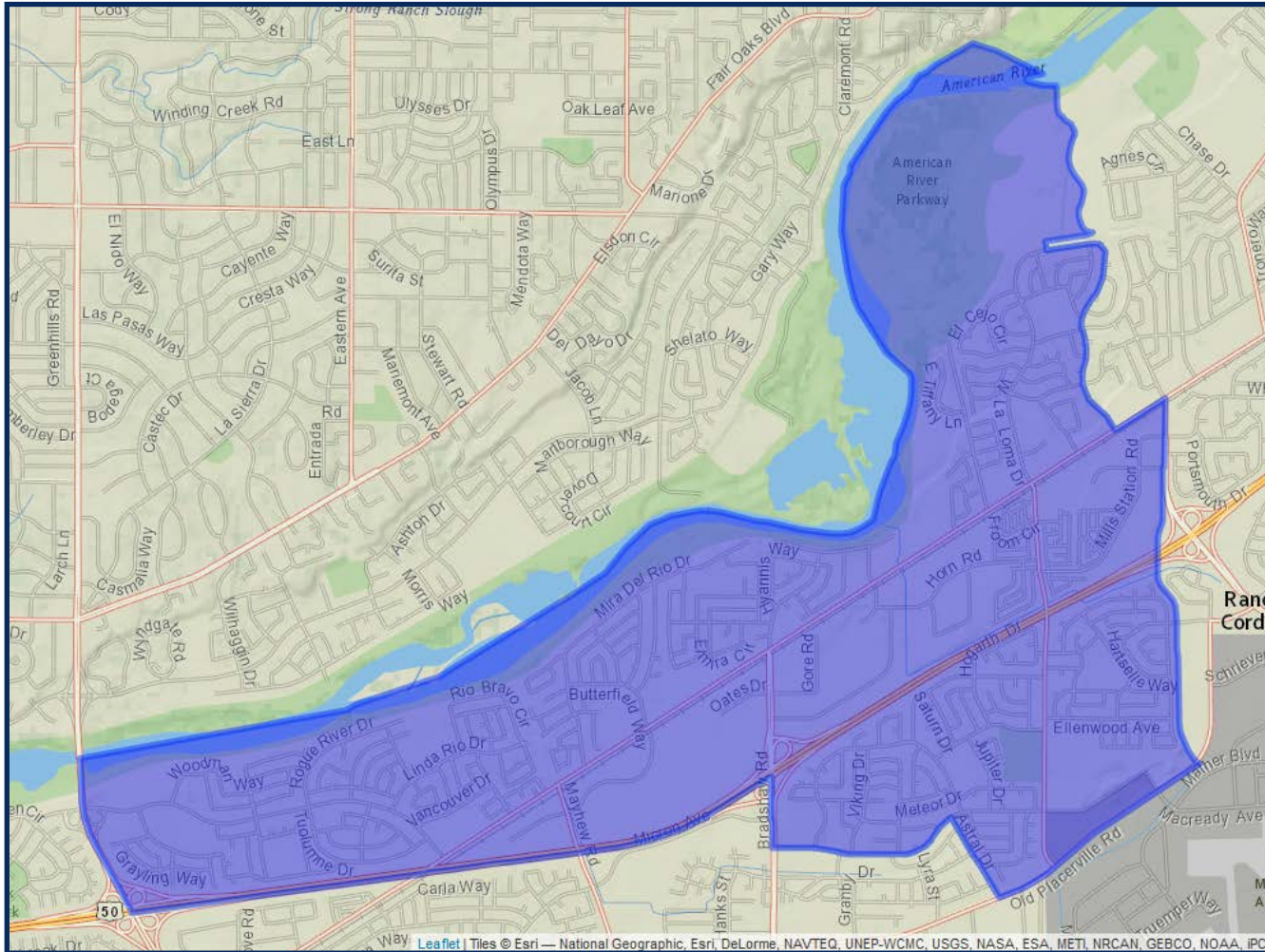


	2020 Count*	2019 CVAP*
Total	25,714	18,803
White	43.75%	51.75%
Black	11.69%	12.26%
Asian	11.37%	11.52%
Hispanic	24.02%	17.36%



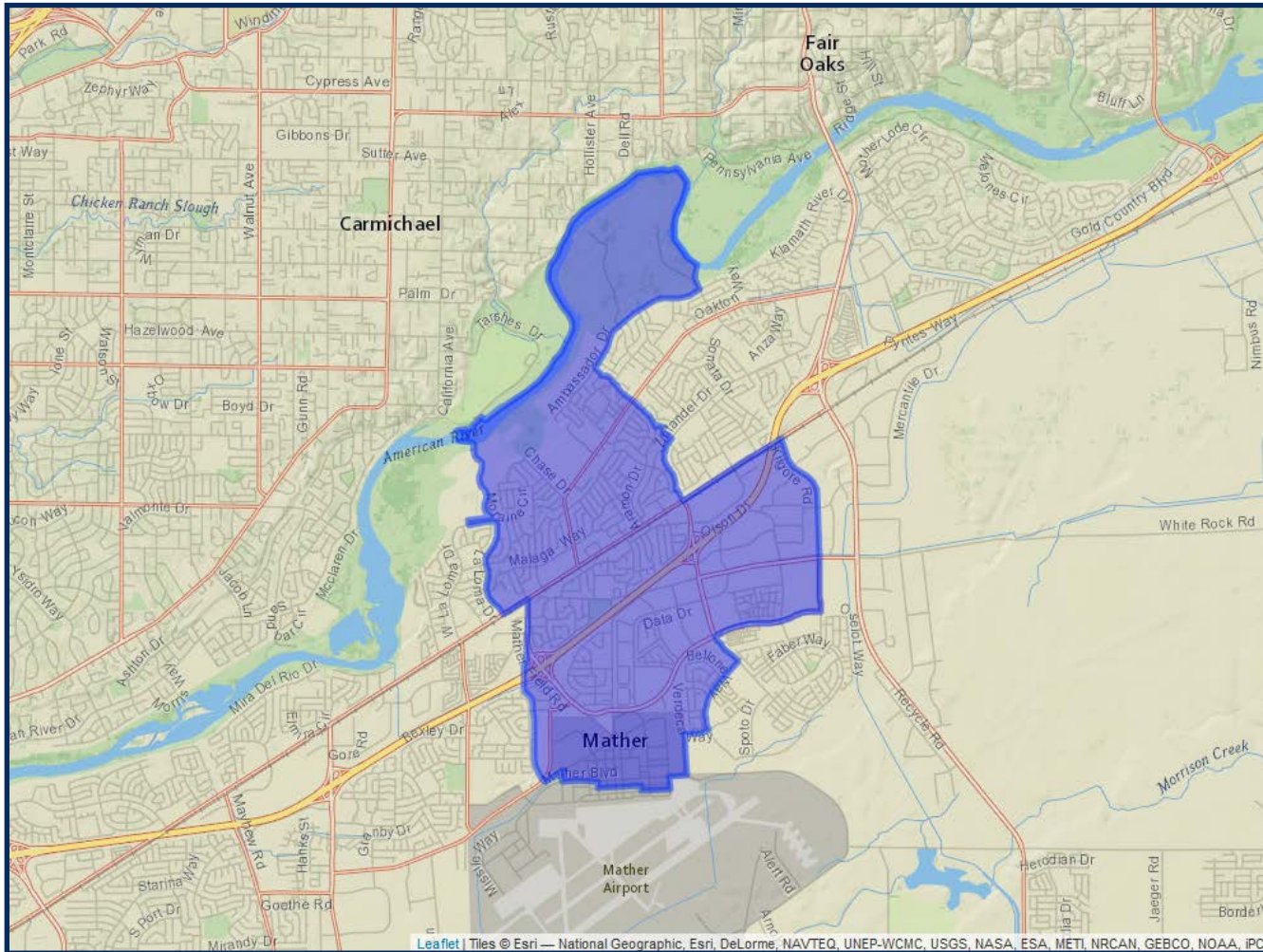
*Adjusted for prisoner reallocation

DISTRICT 3



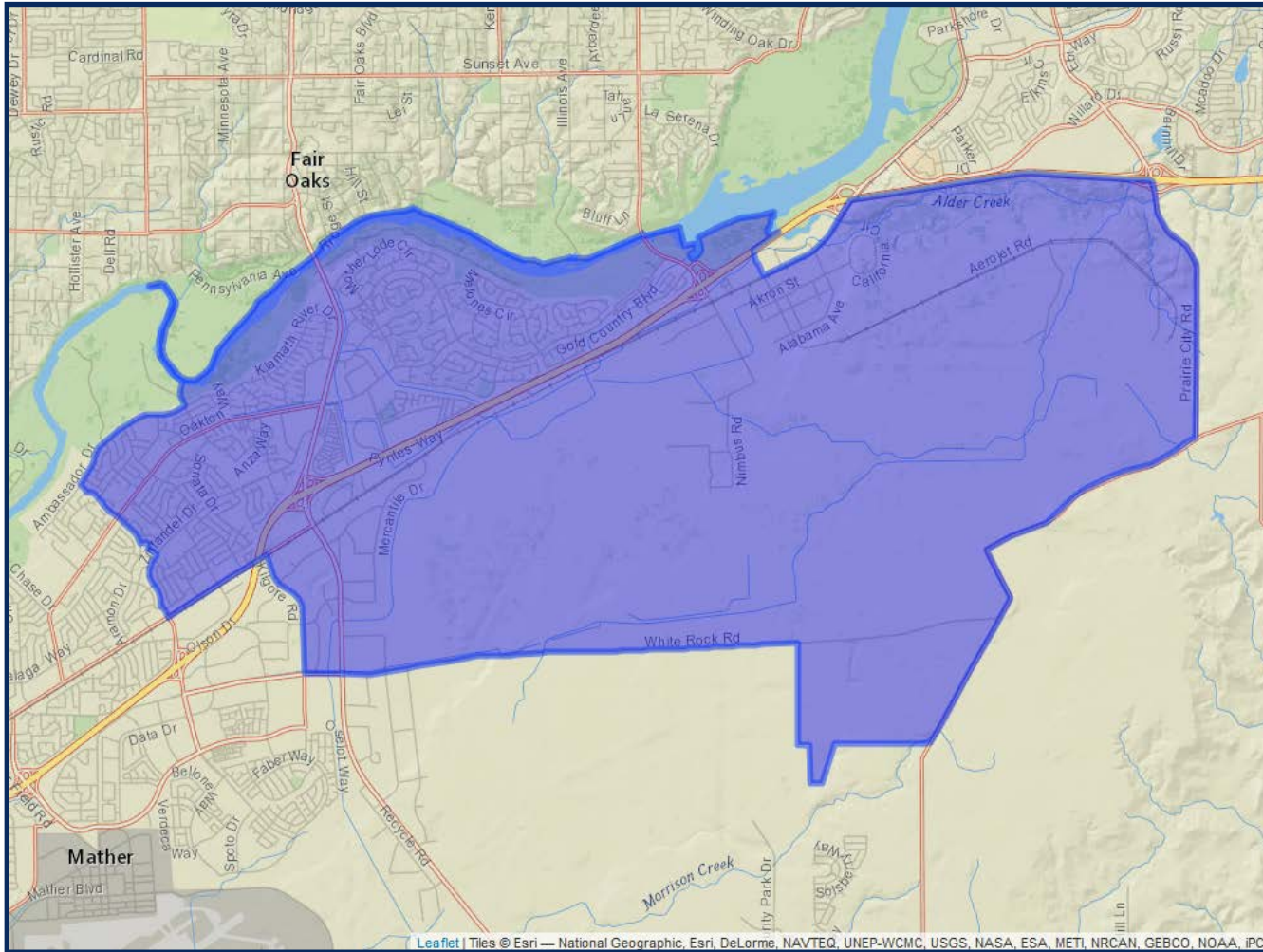
	2020 Count*	2019 CVAP*
Total	25,913	17,997
White	46.22%	50.39%
Black	10.96%	13.23%
Asian	9.99%	9.71%
Hispanic	22.90%	20.52%

DISTRICT 4



	2020 Count*	2019 CVAP*
Total	26,124	15,955
White	44.06%	58.14%
Black	10.48%	10.94%
Asian	10.81%	7.80%
Hispanic	25.03%	16.74%

DISTRICT 5



	2020 Count*	2019 CVAP*
Total	25,276	17,444
White	56.18%	67.65%
Black	5.72%	5.30%
Asian	11.39%	10.22%
Hispanic	18.42%	11.80%

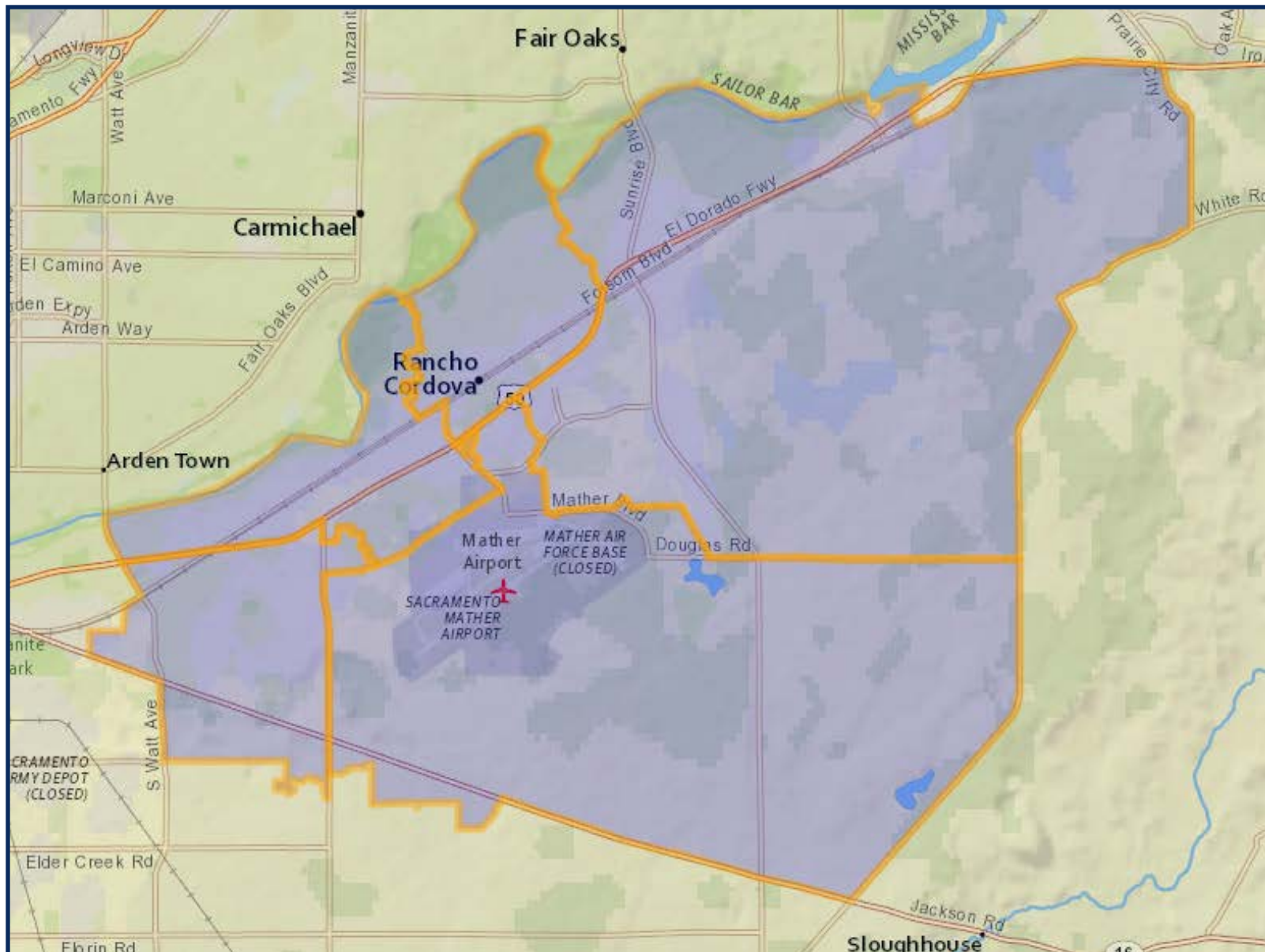
DISTRICTING CRPD DRAFT 3

	DISTRICT 1	DISTRICT 2	DISTRICT 3	DISTRICT 4	DISTRICT 5
2020 Census Count*	25,340	25,771	25,680	25,468	25,742
Deviation #	-260	171	80	-132	142
Deviation %	-1.0%	0.7%	0.3%	-0.5%	0.6%
2010 Census Count	19,768	18,918	24,493	23,817	23,973
2019 CVAP*	16,216	14,295	18,768	17,739	16,392
2010 CVAP	14,197	10,619	16,343	15,602	14,325

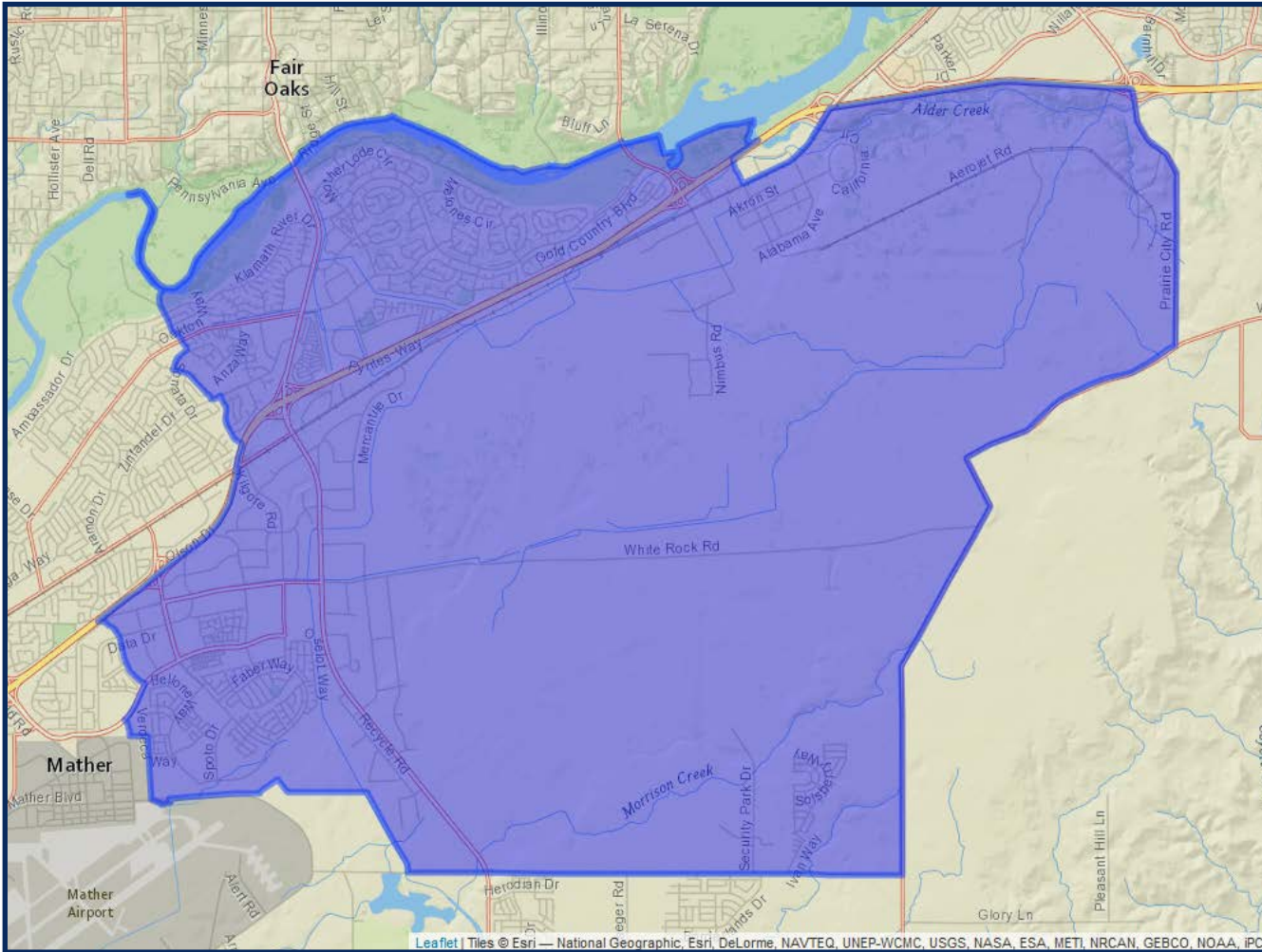


*Adjusted for prisoner reallocation

DISTRICTING CRPD DRAFT 3



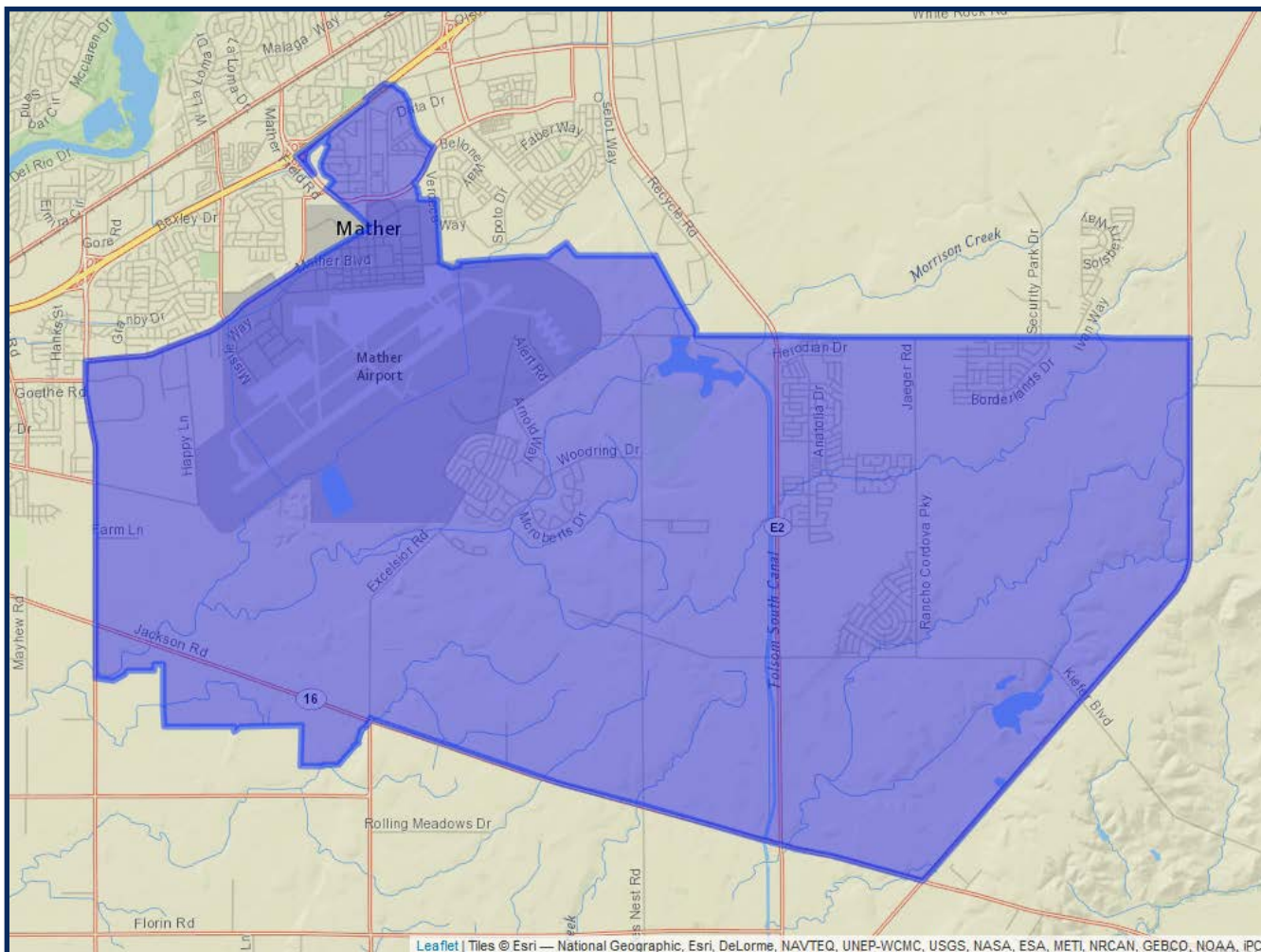
DISTRICT 1



	2020 Count*	2019 CVAP*
Total	25,340	16,216
White	54.15%	64.95%
Black	5.20%	5.24%
Asian	18.71%	15.78%
Hispanic	13.55%	9.16%

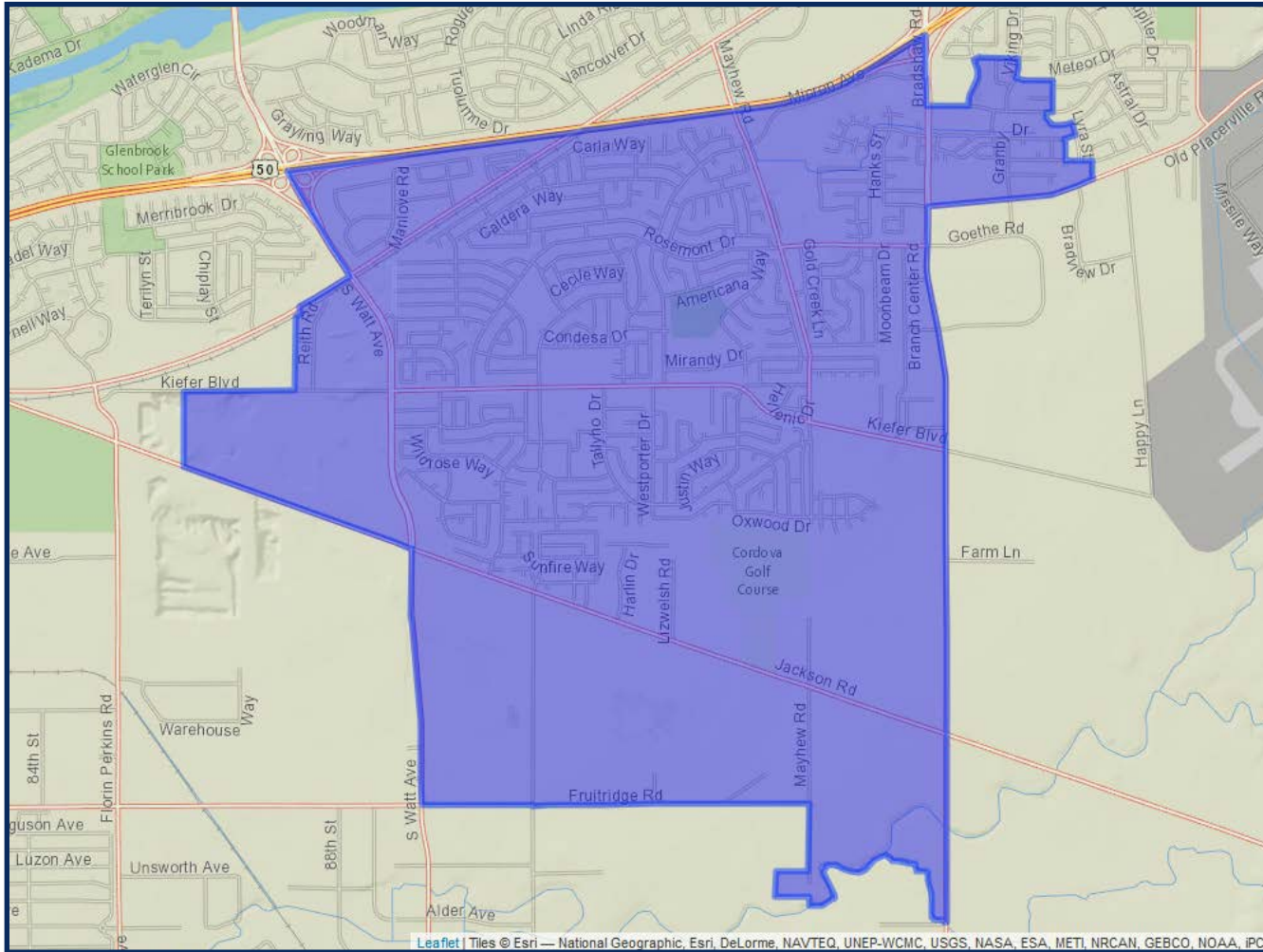
*Adjusted for prisoner reallocation

DISTRICT 2



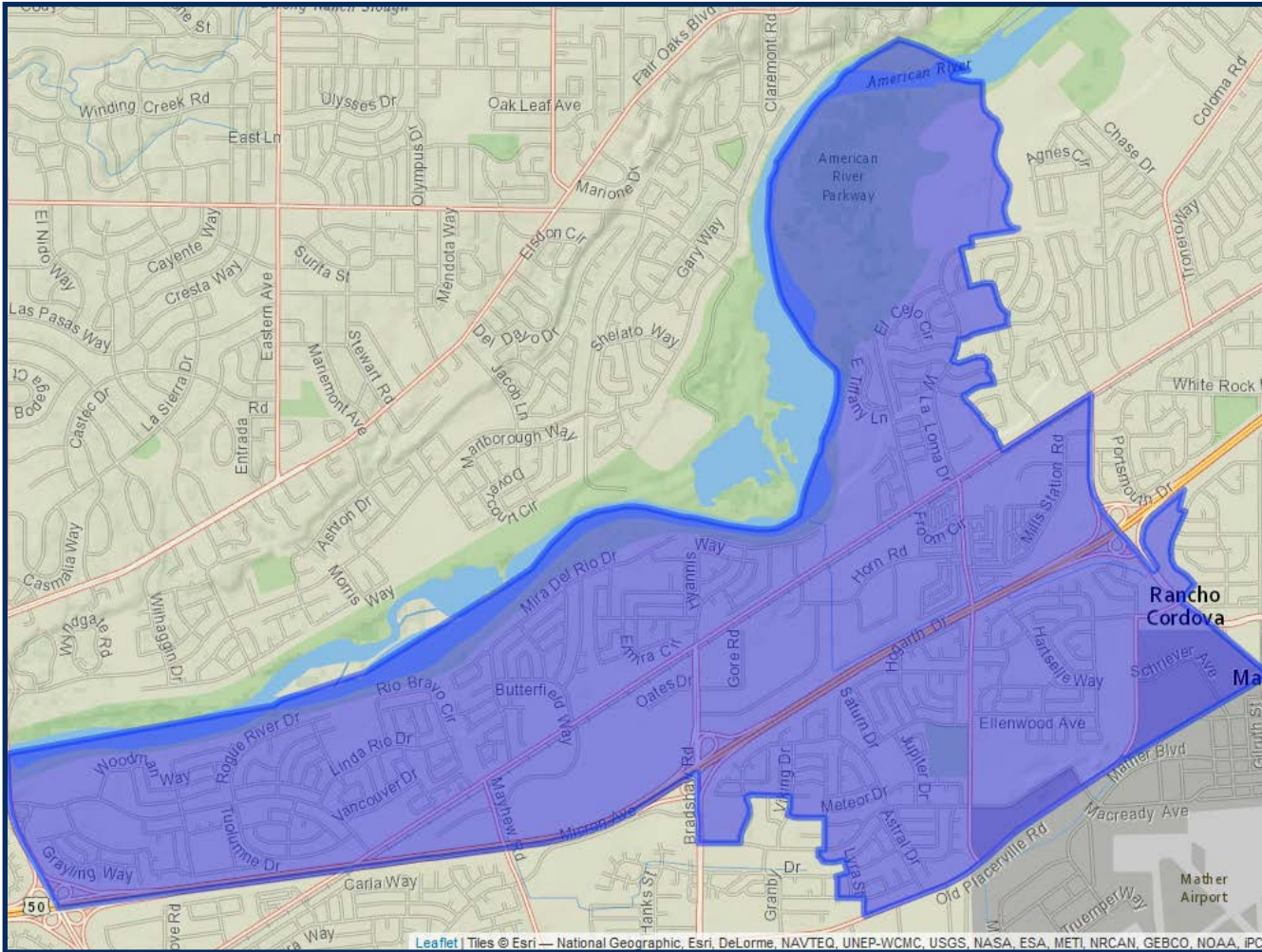
	2020 Count*	2019 CVAP*
Total	25,771	14,295
White	39.51%	48.32%
Black	9.52%	12.25%
Asian	23.01%	20.80%
Hispanic	17.84%	12.66%

DISTRICT 3



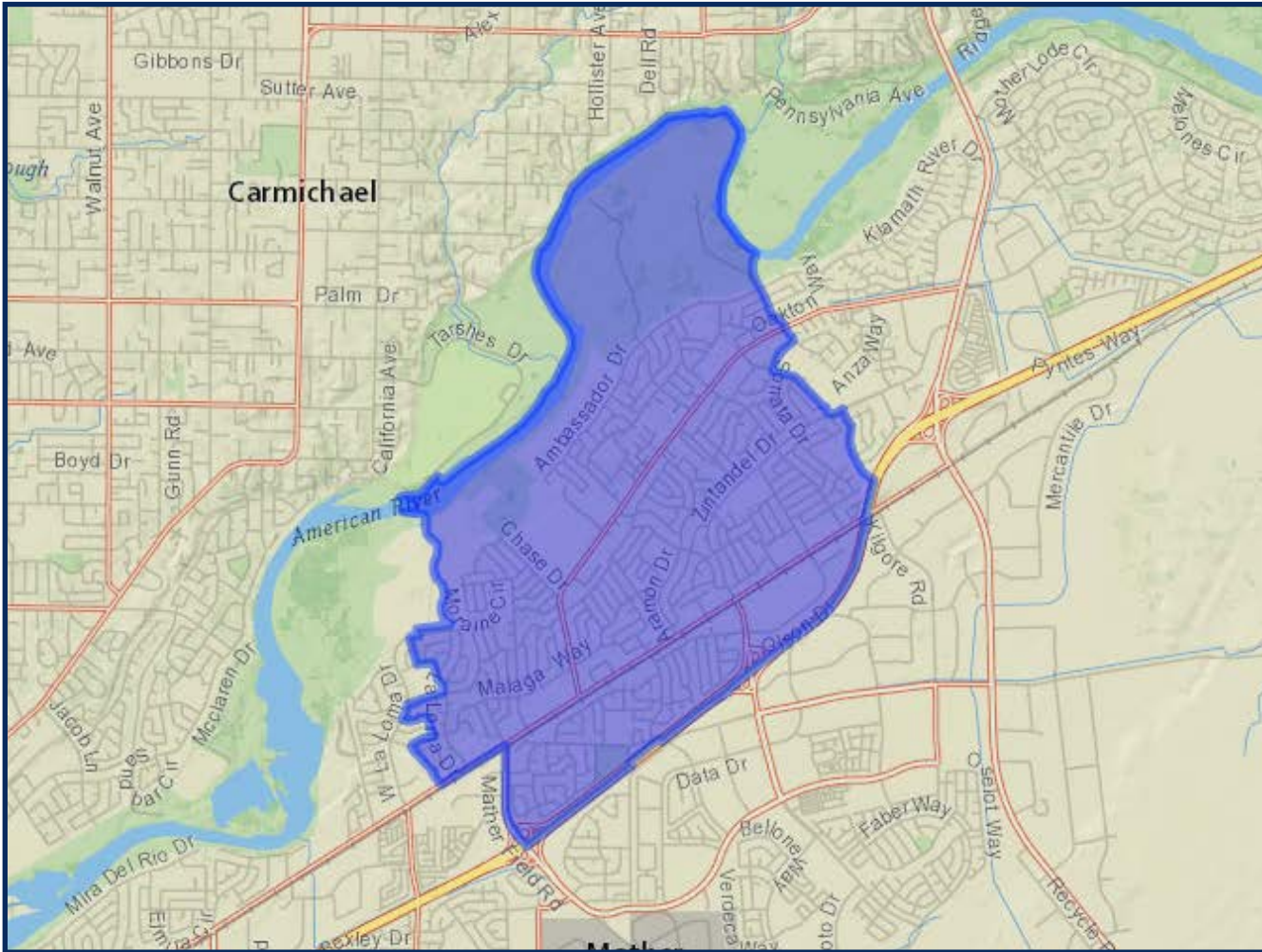
	2020 Count*	2019 CVAP*
Total	25,680	18,768
White	43.94%	51.86%
Black	11.77%	12.37%
Asian	11.29%	11.58%
Hispanic	23.85%	17.23%

DISTRICT 4



	2020 Count*	2019 CVAP*
Total	25,468	17,739
White	46.25%	49.77%
Black	10.81%	13.08%
Asian	10.51%	9.97%
Hispanic	22.49%	20.60%

DISTRICT 5



	2020 Count*	2019 CVAP*
Total	25,742	16,392
White	48.08%	63.44%
Black	8.41%	7.52%
Asian	7.25%	4.72%
Hispanic	27.32%	19.08%

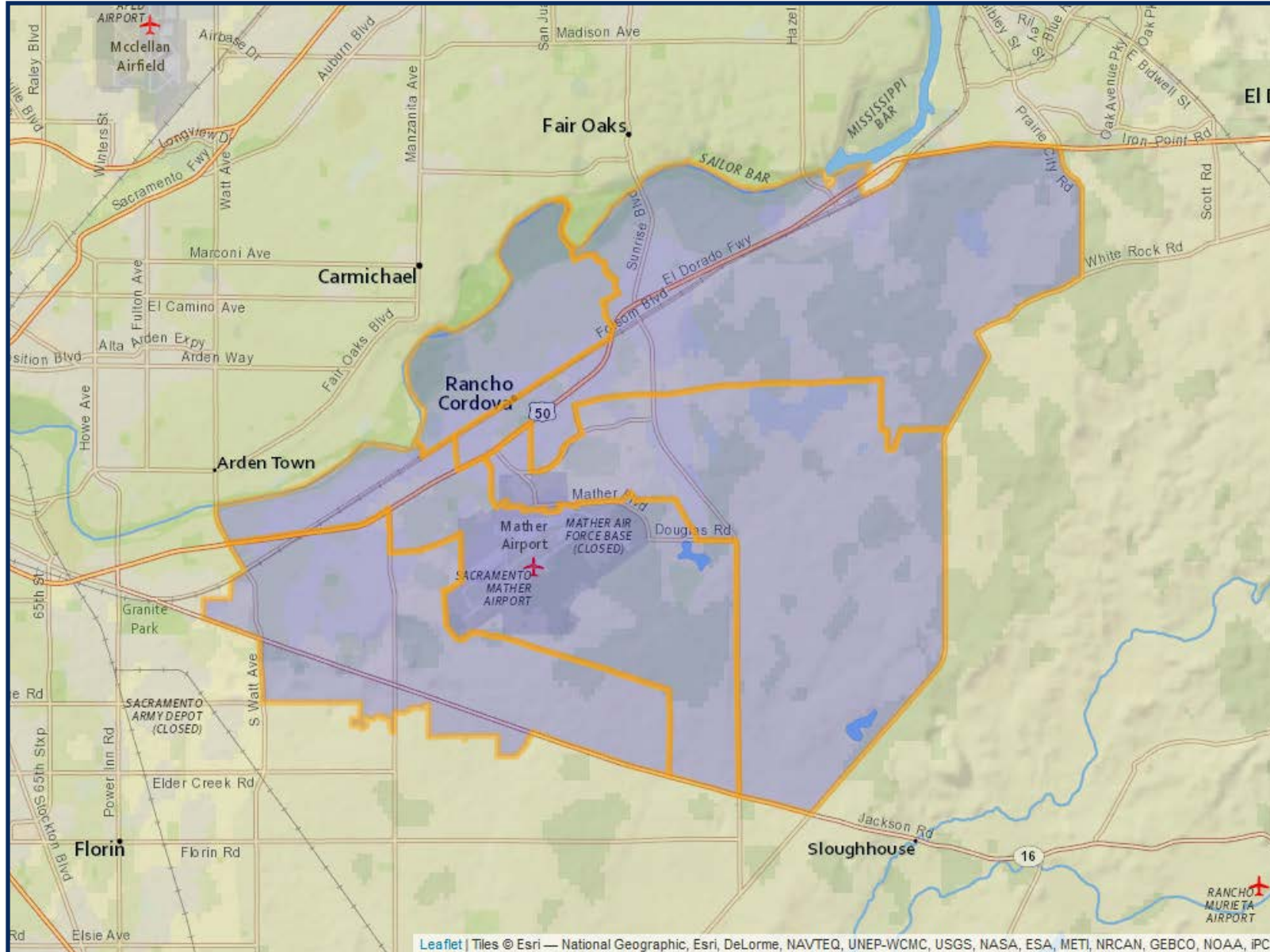
DISTRICTING CRPD DRAFT 4 - ADJUSTED

	DISTRICT 1	DISTRICT 2	DISTRICT 3	DISTRICT 4	DISTRICT 5
2020 Census Count*	25,568	24,475	26,377	26,294	25,287
Deviation #	-32	-1,125	777	694	-313
Deviation %	-0.1%	-4.4%	3.0%	2.7%	-1.2%
2010 Census Count	23,872	23,410	24,938	15,586	23,163
2019 CVAP*	16,670	17,776	18,423	13,674	16,867
2010 CVAP	14,586	16,072	16,260	8,400	15,769



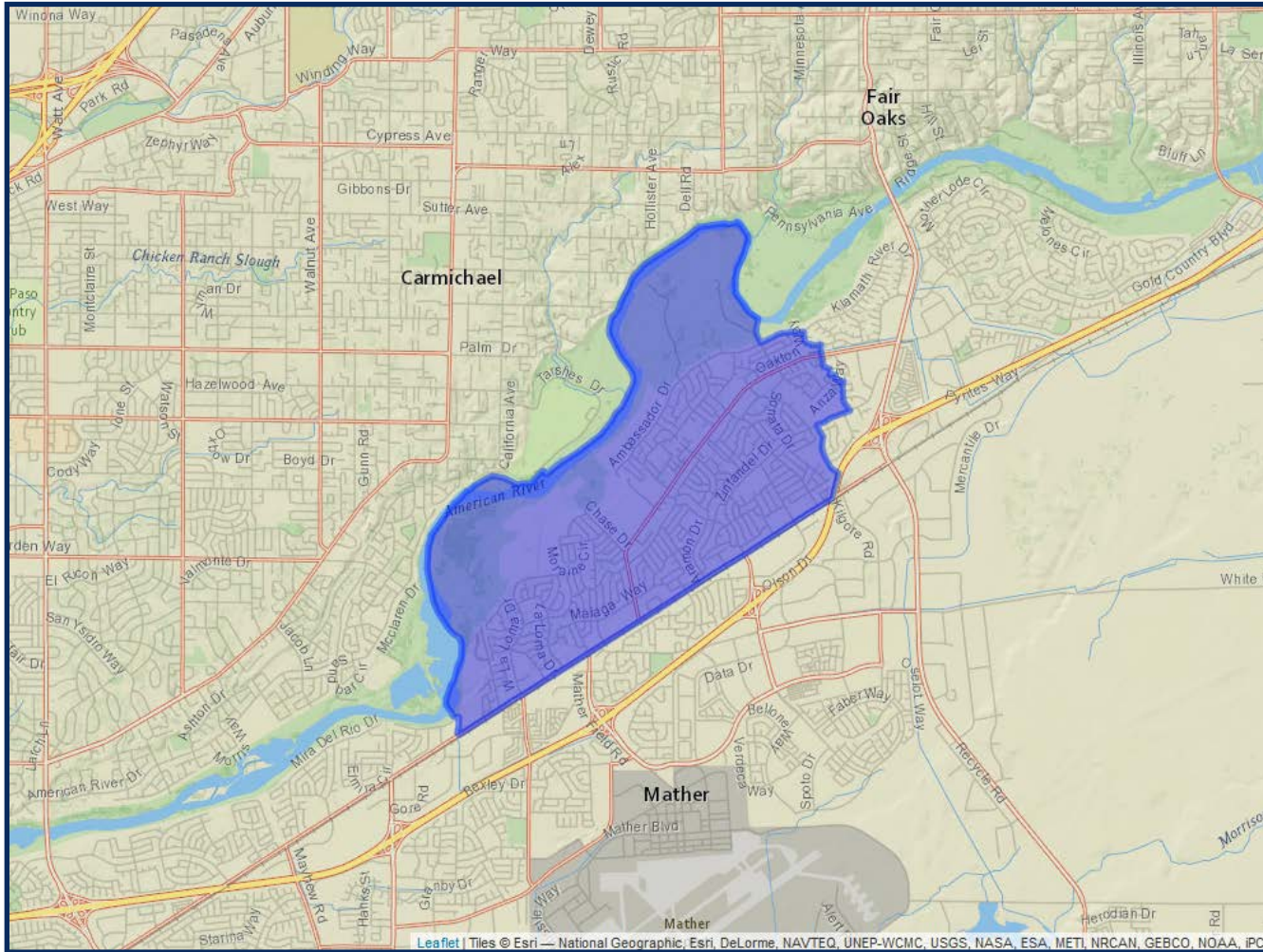
*Adjusted for prisoner reallocation

DISTRICTING CRPD DRAFT 4 - ADJUSTED



DISTRICTING CRPD DRAFT 4 - ADJUSTED

DISTRICT 1



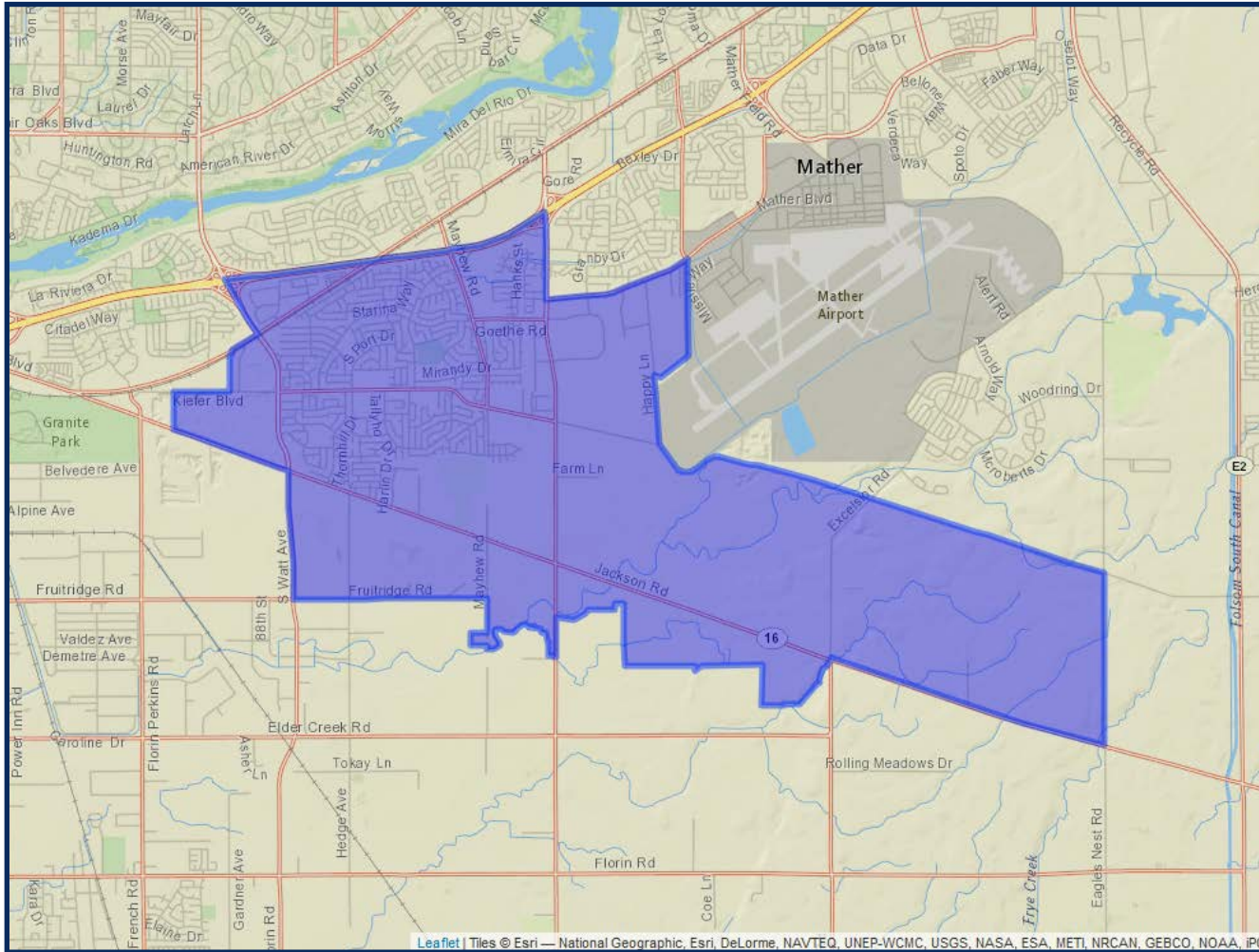
	2020 Count*	2019 CVAP*
Total	25,568	16,670
White	48.69%	65.06%
Black	8.66%	5.68%
Asian	7.79%	5.42%
Hispanic	25.52%	17.84%



*Adjusted for prisoner reallocation

DISTRICTING CRPD DRAFT 4 - ADJUSTED

DISTRICT 2



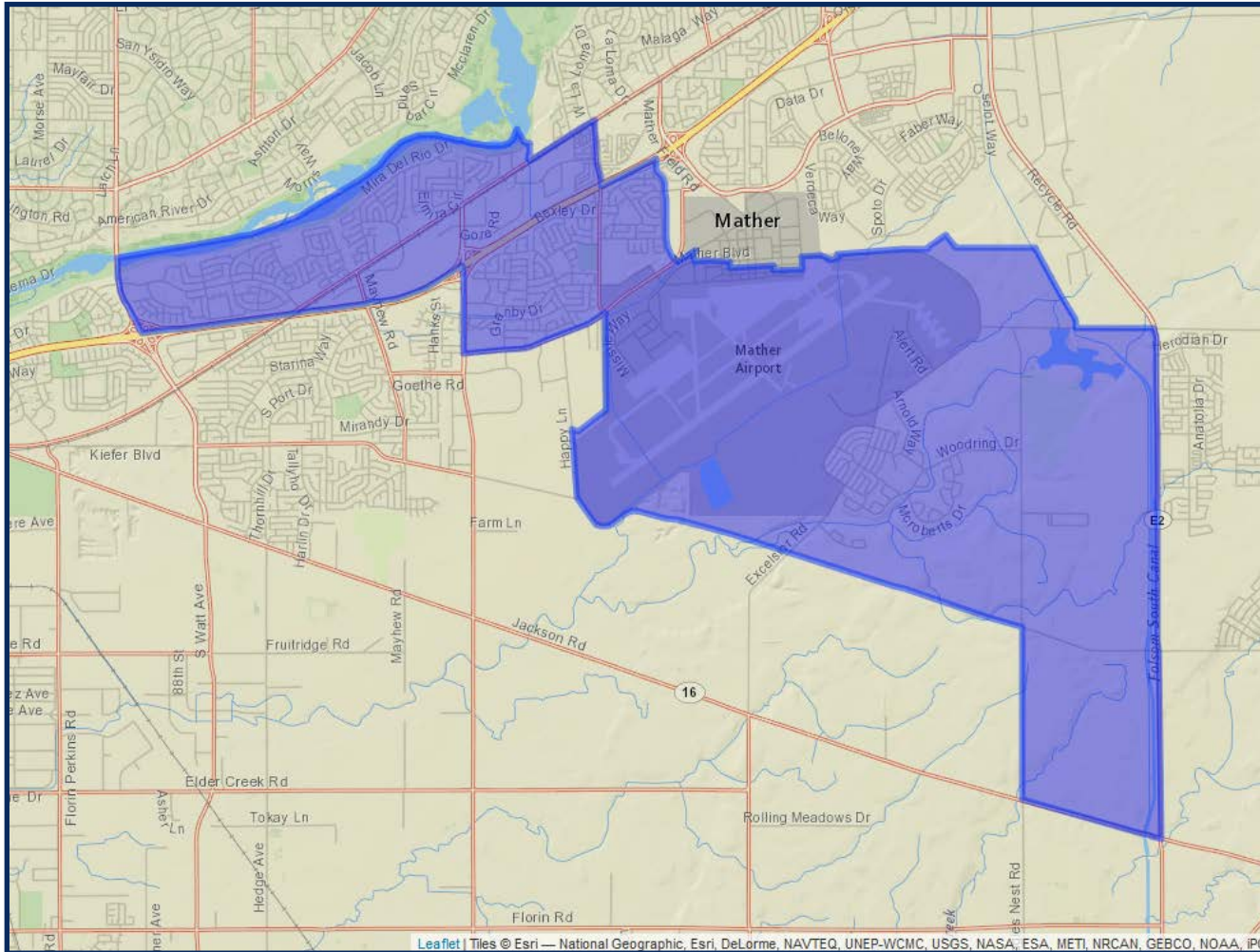
	2020 Count*	2019 CVAP*
Total	24,475	17,776
White	43.63%	51.83%
Black	11.72%	12.33%
Asian	11.44%	11.64%
Hispanic	24.01%	17.25%



*Adjusted for prisoner reallocation

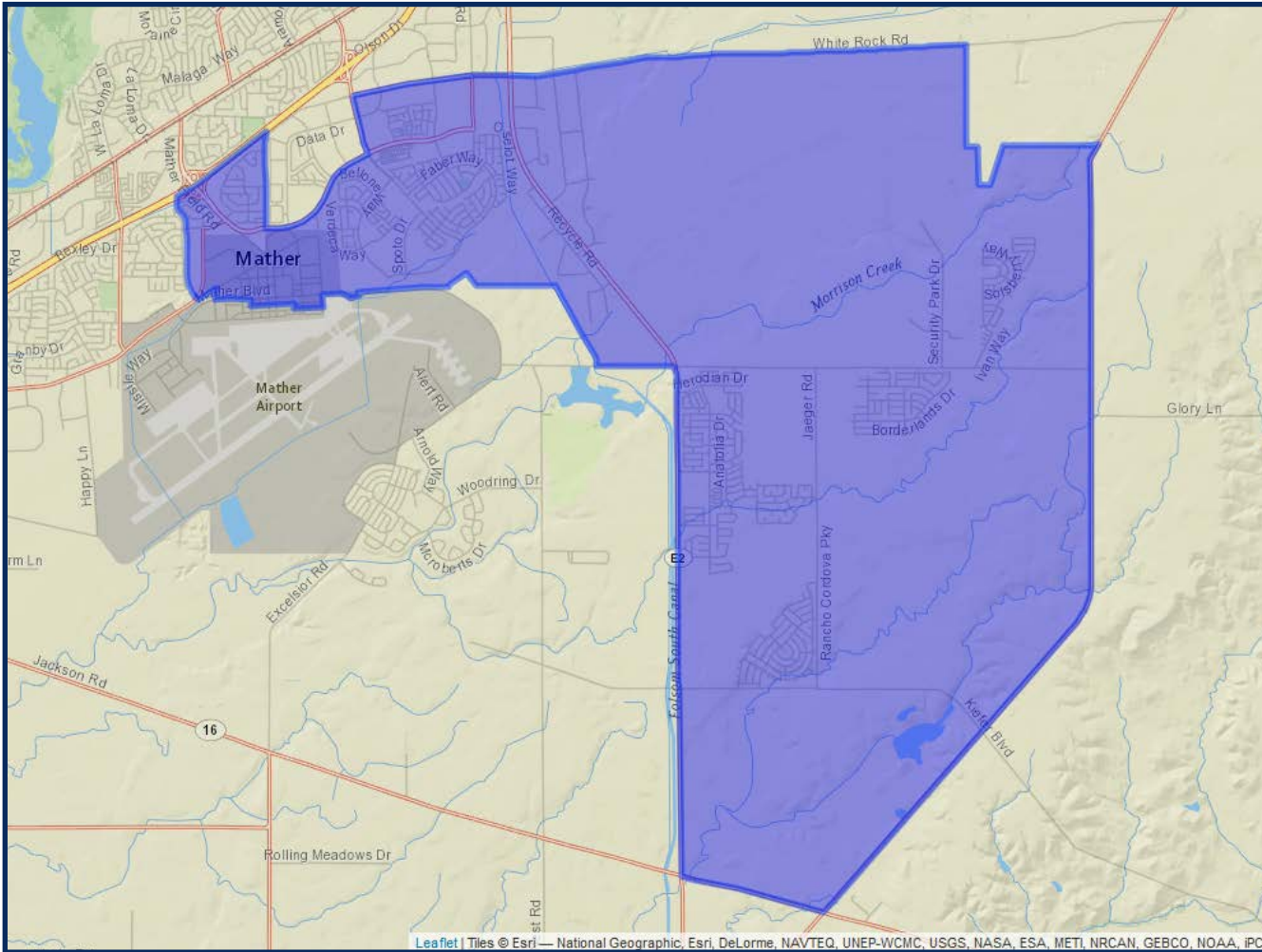
DISTRICTING CRPD DRAFT 4 - ADJUSTED

DISTRICT 3



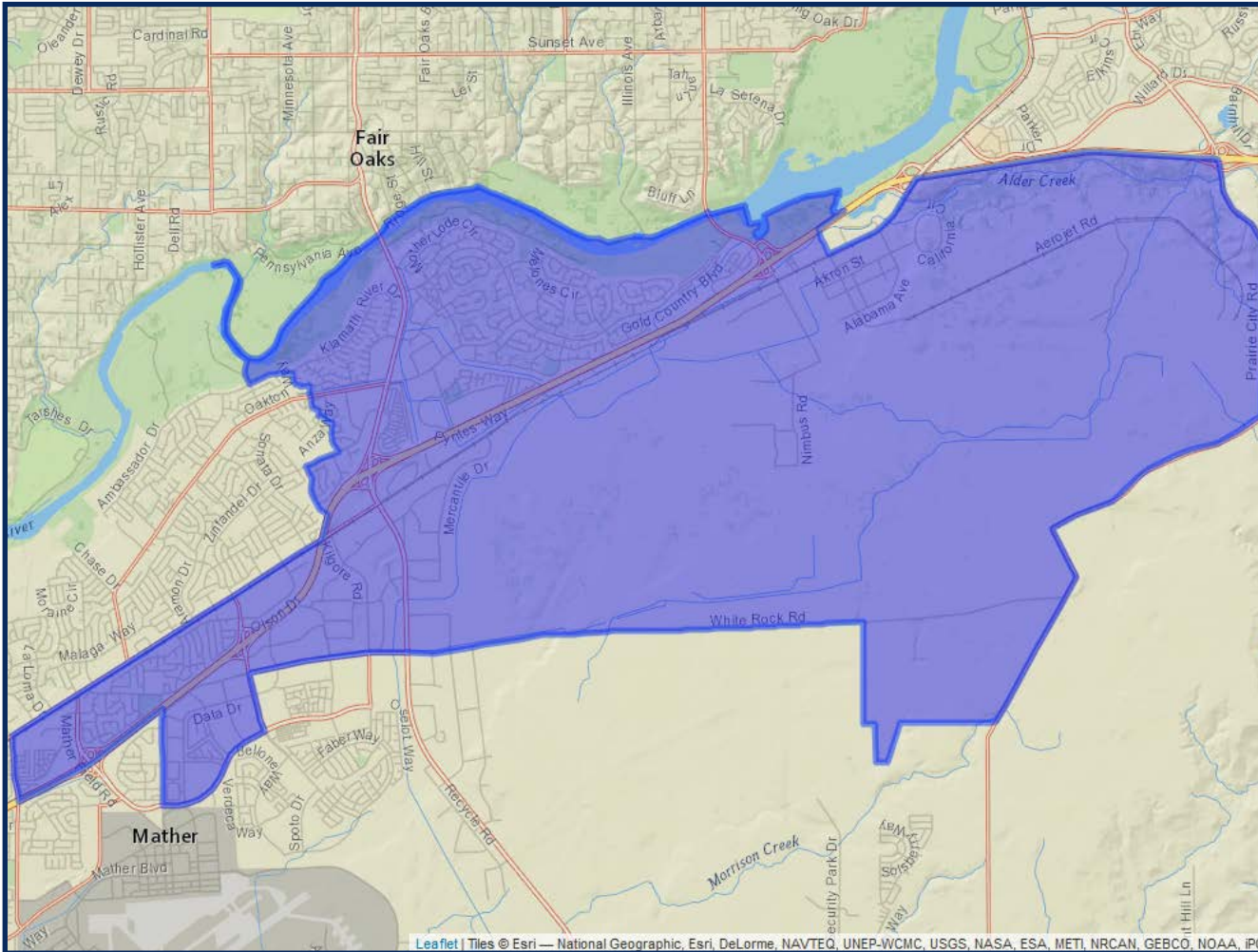
	2020 Count*	2019 CVAP*
Total	26,377	18,423
White	48.65%	51.04%
Black	9.50%	11.78%
Asian	10.50%	11.68%
Hispanic	21.74%	19.36%

DISTRICT 4



	2020 Count*	2019 CVAP*
Total	26,294	13,674
White	40.13%	47.02%
Black	8.20%	10.13%
Asian	27.16%	23.58%
Hispanic	14.79%	13.40%

DISTRICT 5



	2020 Count*	2019 CVAP*
Total	25,287	16,867
White	50.74%	62.31%
Black	7.79%	10.56%
Asian	13.48%	11.26%
Hispanic	19.34%	11.09%

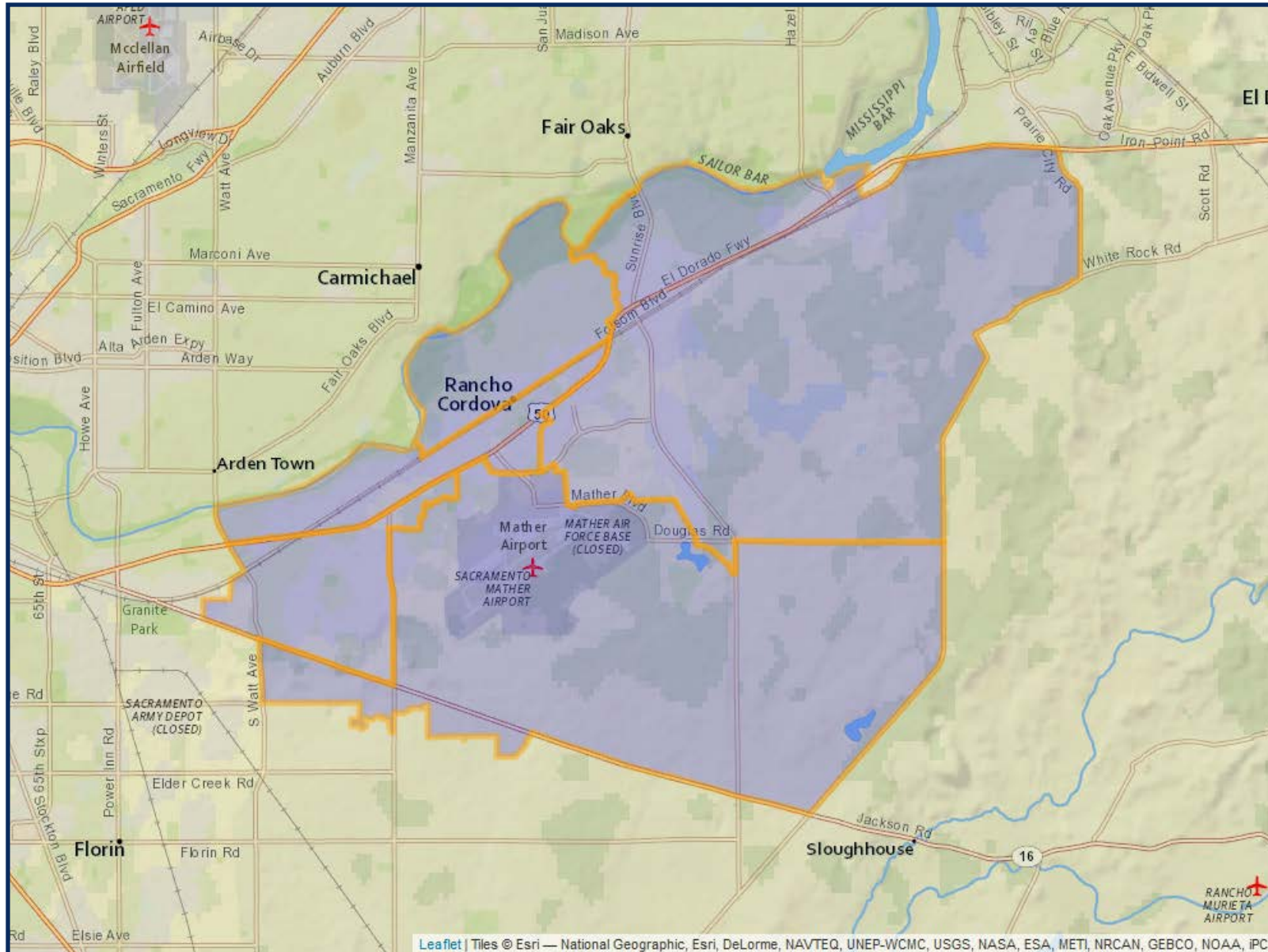
DISTRICTING CRPD PUBLIC SUBMISSION I

	DISTRICT 1	DISTRICT 2	DISTRICT 3	DISTRICT 4	DISTRICT 5
2020 Census Count*	26,686	26,049	24,453	26,505	24,308
Deviation #	1,086	449	-1,147	905	-1,292
Deviation %	4.2%	1.8%	-4.5%	3.5%	-5.0%
2010 Census Count	25,650	24,321	18,881	19,567	22,550
2019 CVAP*	19,508	16,936	15,534	14,903	16,529
2010 CVAP	17,146	14,850	13,685	11,073	14,332

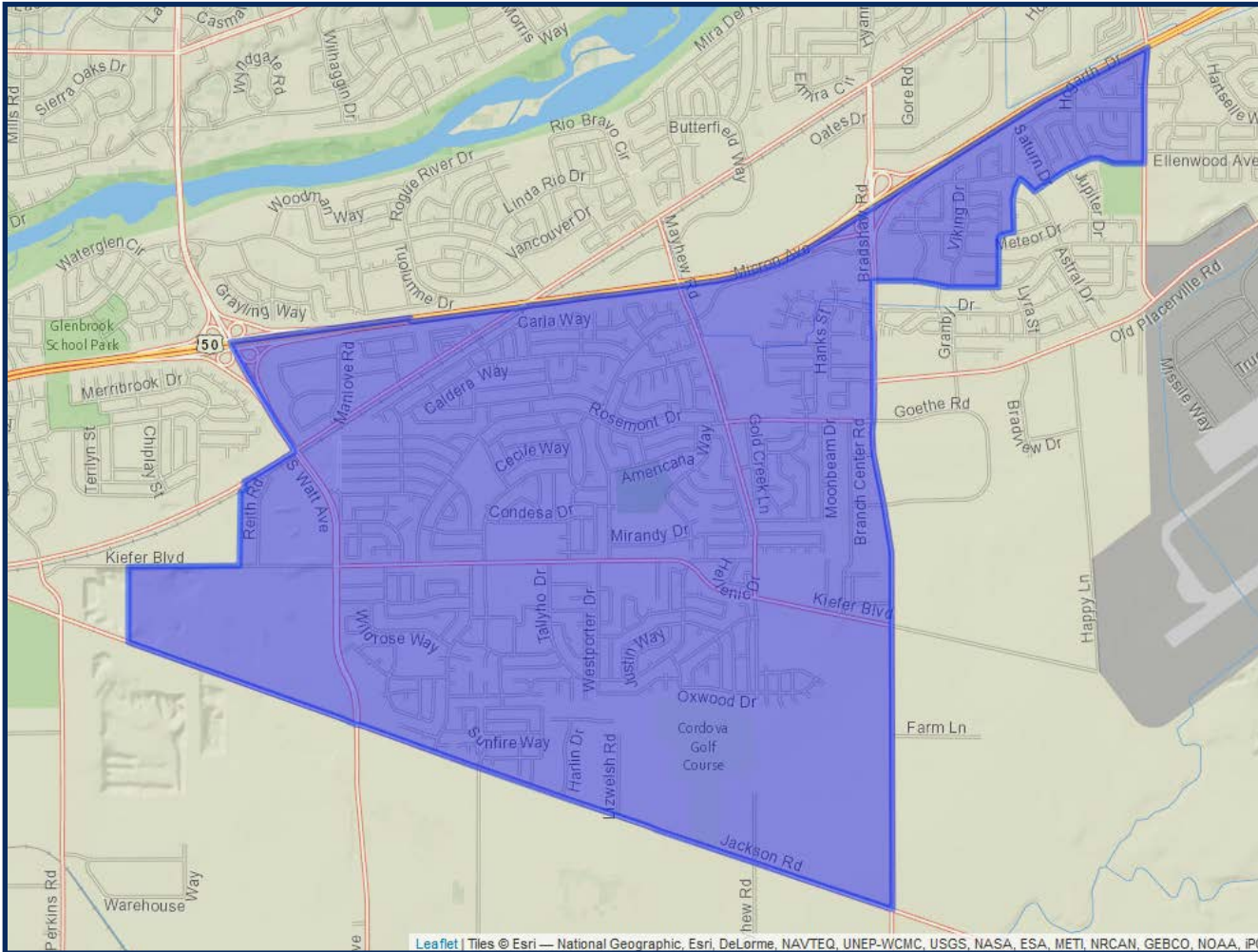


*Adjusted for prisoner reallocation

DISTRICTING CRPD PUBLIC SUBMISSION I

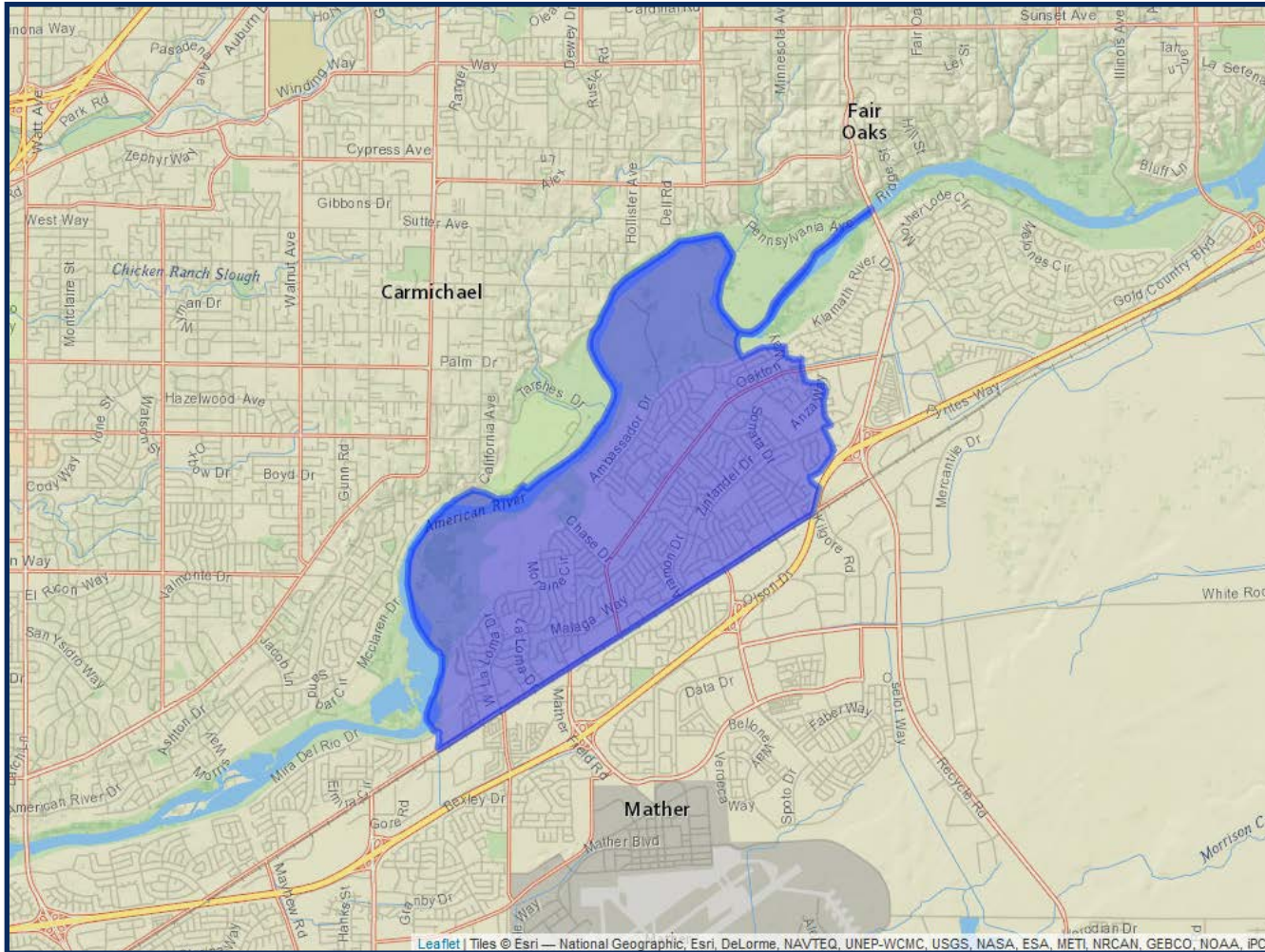


DISTRICT 1



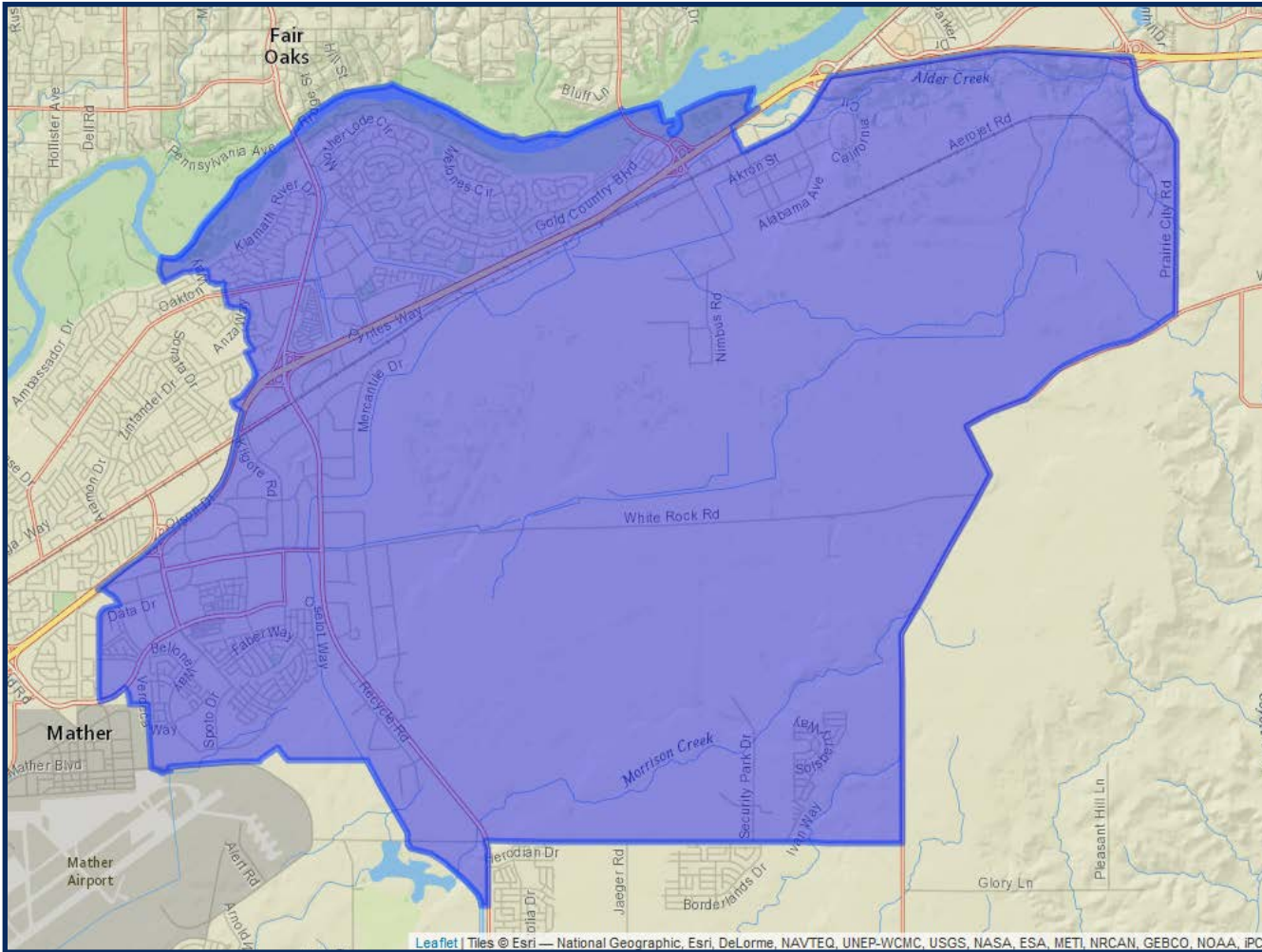
	2020 Count*	2019 CVAP*
Total	26,686	19,508
White	43.97%	50.64%
Black	11.85%	13.09%
Asian	11.53%	11.96%
Hispanic	23.50%	17.00%

DISTRICT 2



	2020 Count*	2019 CVAP*
Total	26,049	16,936
White	48.79%	65.13%
Black	8.58%	5.67%
Asian	7.73%	5.43%
Hispanic	25.59%	17.82%

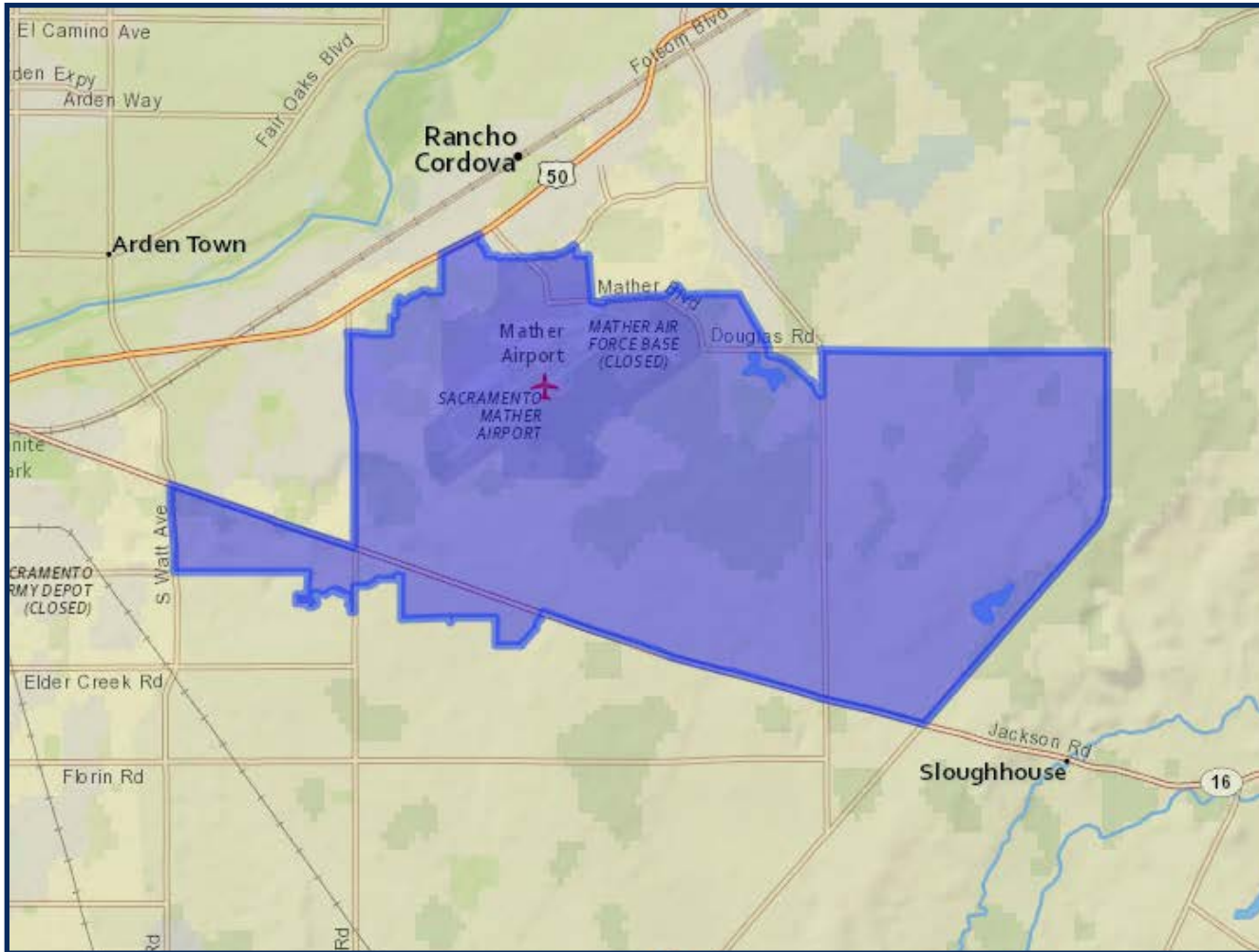
DISTRICT 3



	2020 Count*	2019 CVAP*
Total	24,453	15,534
White	53.27%	62.86%
Black	5.19%	5.79%
Asian	20.31%	17.36%
Hispanic	12.83%	9.21%

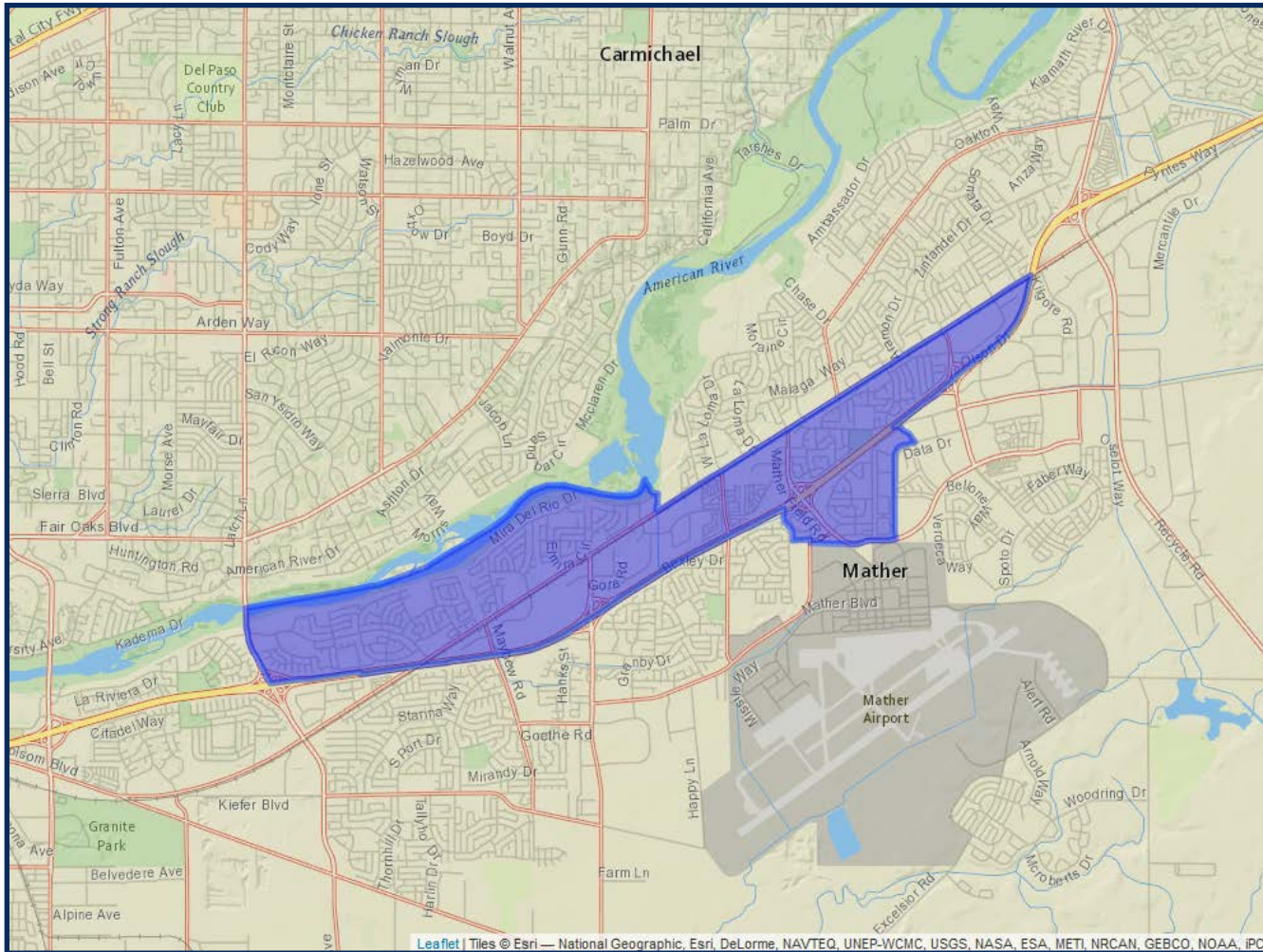
*Adjusted for prisoner reallocation

DISTRICT 4



	2020 Count*	2019 CVAP*
Total	26,505	14,903
White	42.44%	48.87%
Black	8.32%	10.09%
Asian	21.88%	21.11%
Hispanic	17.77%	13.91%

DISTRICT 5



	2020 Count*	2019 CVAP*
Total	24,308	16,529
White	43.71%	51.09%
Black	11.68%	15.47%
Asian	9.27%	6.98%
Hispanic	25.23%	21.01%