



# Preliminary District-Wide Facilities Distribution Plan

BOARD OF DIRECTORS MEETING

JUNE 21, 2017

## AGENDA ITEM F-1

---

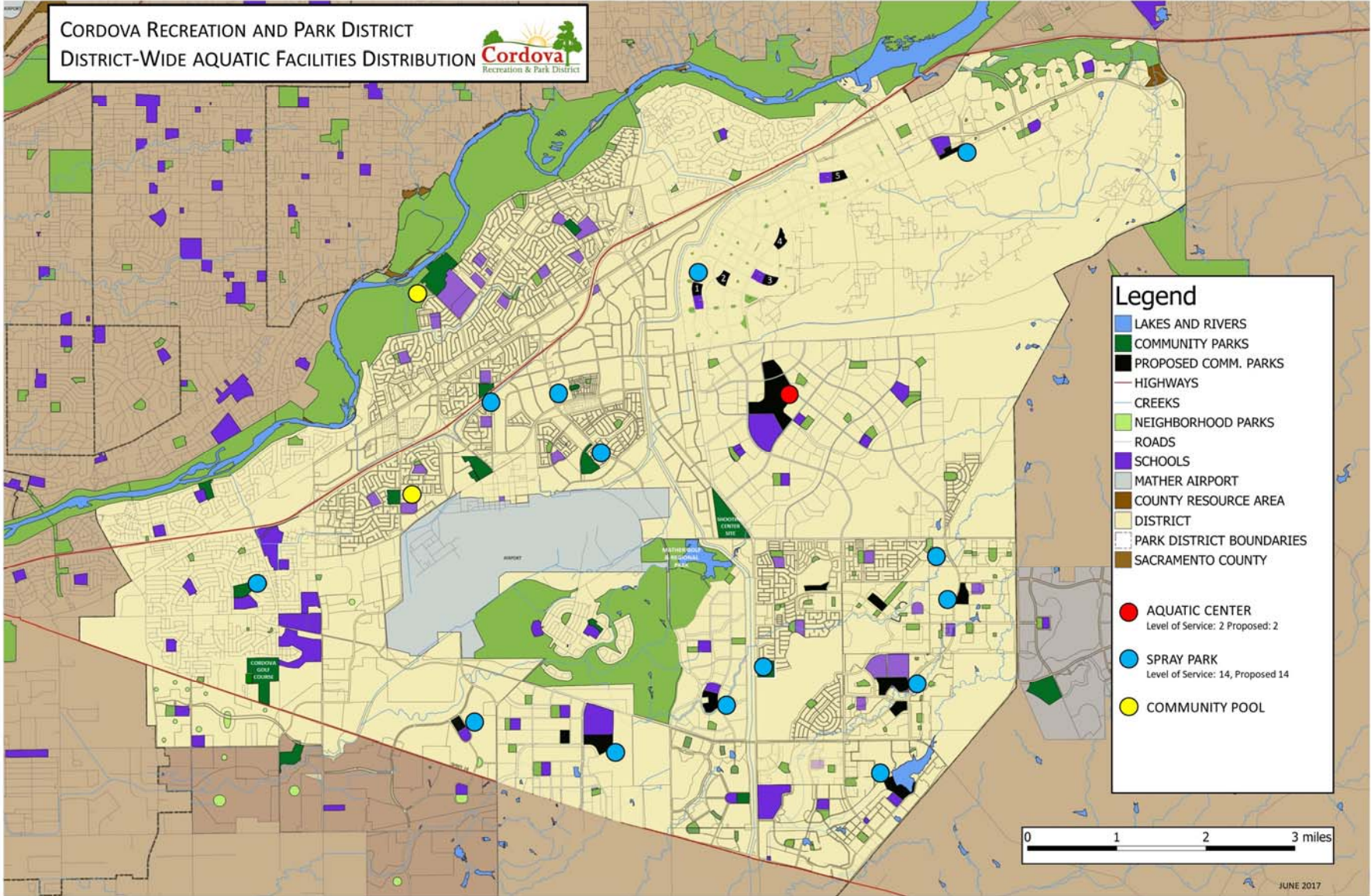
- Staff recommends the Board of Directors accept the “Preliminary District-wide Facility Distribution Plan, June 2017”.
- Board Comments from May Visioning Session have been tracked
- Review Changes to Preliminary District-Wide Facility Plan Maps
- Seek Board approval on revised Preliminary Plan

## GENERAL COMMENTS AND CHANGES

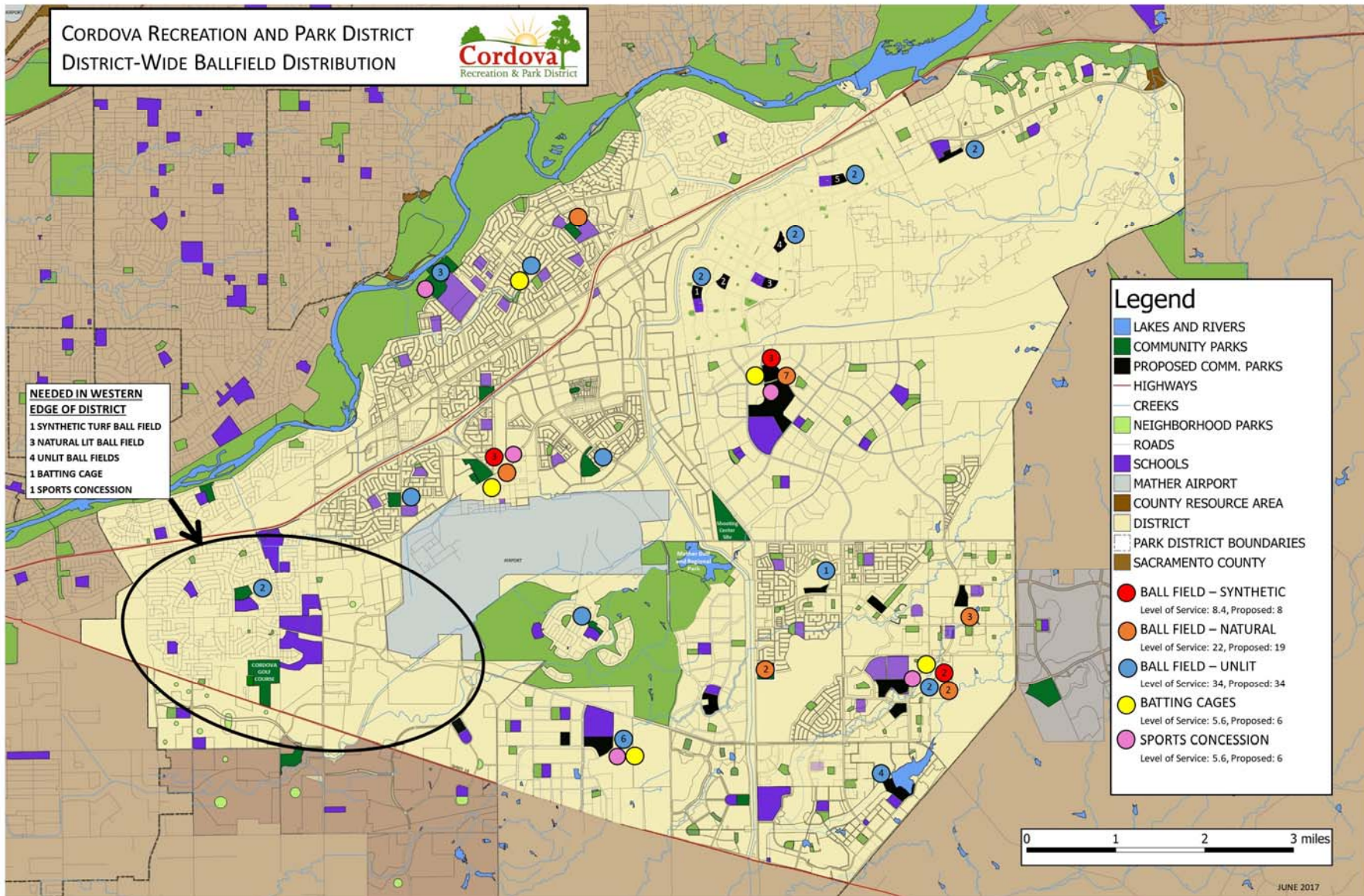
---

- Board made comments at the May 31 Visioning Session. Changes are reflected on tonight's map presentation.
- Adjusted park layout using the current preliminary Westborough development plans. Allowed for additional ballfields.
- Added proposed facilities to the western quadrant.

**CORDOVA RECREATION AND PARK DISTRICT  
DISTRICT-WIDE AQUATIC FACILITIES DISTRIBUTION**



**CORDOVA RECREATION AND PARK DISTRICT  
DISTRICT-WIDE BALLFIELD DISTRIBUTION**



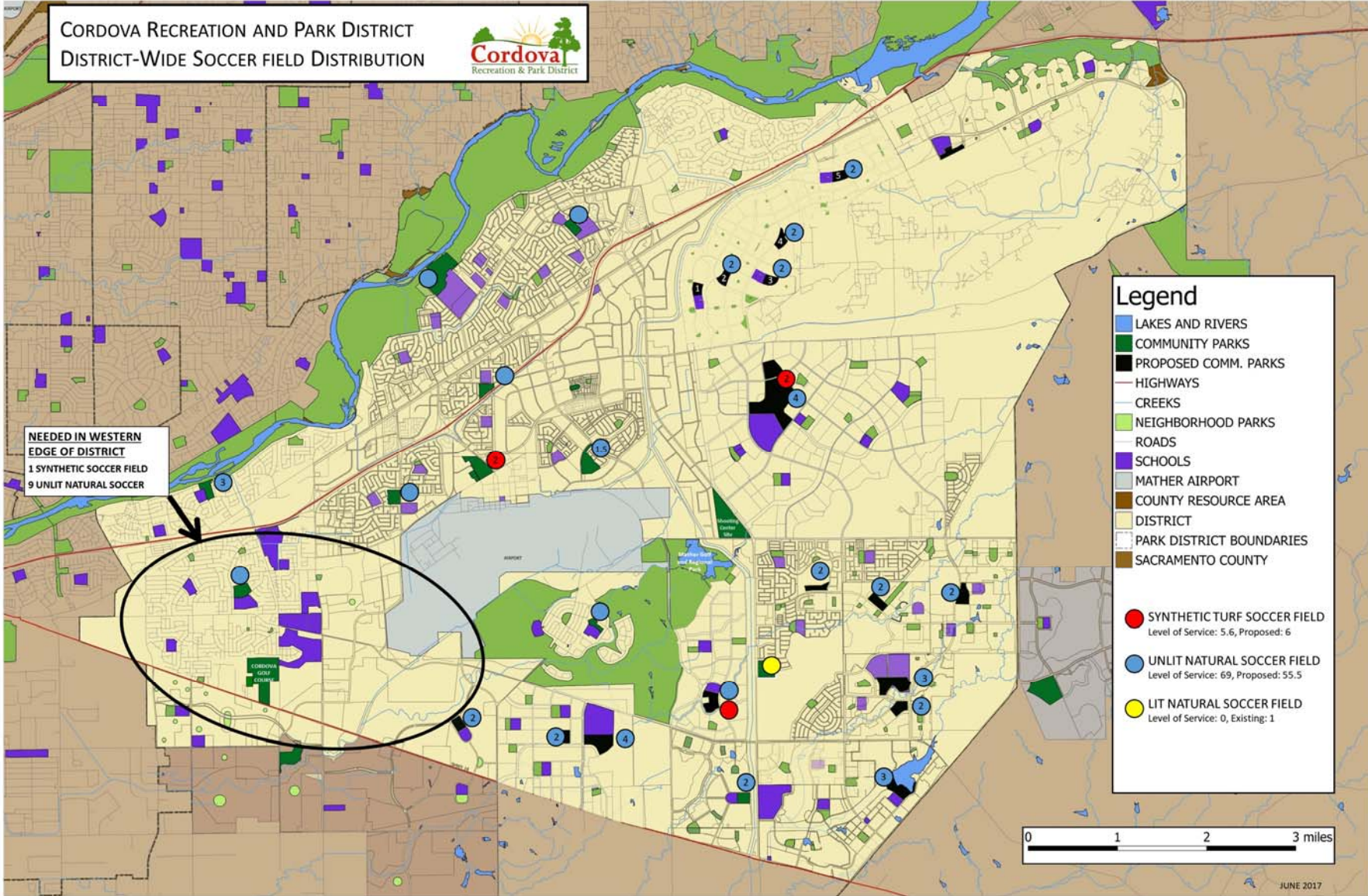
**NEEDED IN WESTERN  
EDGE OF DISTRICT**  
 1 SYNTHETIC TURF BALL FIELD  
 3 NATURAL LIT BALL FIELD  
 4 UNLIT BALL FIELDS  
 1 BATTING CAGE  
 1 SPORTS CONCESSION

**Legend**

- LAKES AND RIVERS
- COMMUNITY PARKS
- PROPOSED COMM. PARKS
- HIGHWAYS
- CREEKS
- NEIGHBORHOOD PARKS
- ROADS
- SCHOOLS
- MATHER AIRPORT
- COUNTY RESOURCE AREA
- DISTRICT
- PARK DISTRICT BOUNDARIES
- SACRAMENTO COUNTY
- BALL FIELD – SYNTHETIC  
Level of Service: 8.4, Proposed: 8
- BALL FIELD – NATURAL  
Level of Service: 2.2, Proposed: 1.9
- BALL FIELD – UNLIT  
Level of Service: 3.4, Proposed: 3.4
- BATTING CAGES  
Level of Service: 5.6, Proposed: 6
- SPORTS CONCESSION  
Level of Service: 5.6, Proposed: 6



**CORDOVA RECREATION AND PARK DISTRICT  
DISTRICT-WIDE SOCCER FIELD DISTRIBUTION**



**NEEDED IN WESTERN  
EDGE OF DISTRICT**  
1 SYNTHETIC SOCCER FIELD  
9 UNLIT NATURAL SOCCER

**Legend**

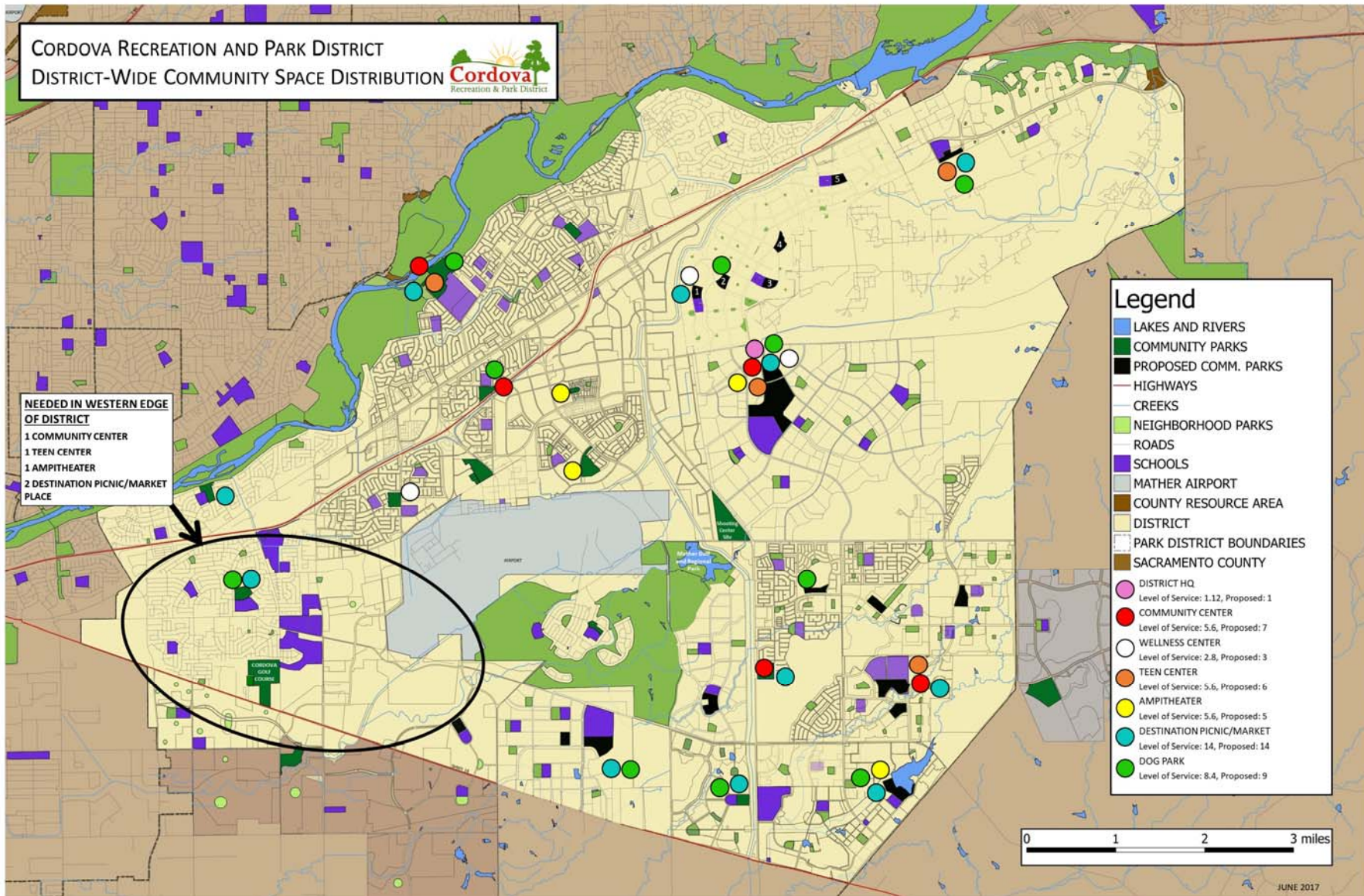
- LAKES AND RIVERS
- COMMUNITY PARKS
- PROPOSED COMM. PARKS
- HIGHWAYS
- CREEKS
- NEIGHBORHOOD PARKS
- ROADS
- SCHOOLS
- MATHER AIRPORT
- COUNTY RESOURCE AREA
- DISTRICT
- PARK DISTRICT BOUNDARIES
- SACRAMENTO COUNTY

- SYNTHETIC TURF SOCCER FIELD  
Level of Service: 5,6, Proposed: 6
- UNLIT NATURAL SOCCER FIELD  
Level of Service: 69, Proposed: 55.5
- LIT NATURAL SOCCER FIELD  
Level of Service: 0, Existing: 1



**CORDOVA RECREATION AND PARK DISTRICT  
DISTRICT-WIDE COMMUNITY SPACE DISTRIBUTION**



**NEEDED IN WESTERN EDGE  
OF DISTRICT**  
 1 COMMUNITY CENTER  
 1 TEEN CENTER  
 1 AMPITHEATER  
 2 DESTINATION PICNIC/MARKET  
 PLACE

**Legend**

- LAKES AND RIVERS
- COMMUNITY PARKS
- PROPOSED COMM. PARKS
- HIGHWAYS
- CREEKS
- NEIGHBORHOOD PARKS
- ROADS
- SCHOOLS
- MATHER AIRPORT
- COUNTY RESOURCE AREA
- DISTRICT
- PARK DISTRICT BOUNDARIES
- SACRAMENTO COUNTY
- DISTRICT HQ  
Level of Service: 1.12, Proposed: 1
- COMMUNITY CENTER  
Level of Service: 5.6, Proposed: 7
- WELLNESS CENTER  
Level of Service: 2.8, Proposed: 3
- TEEN CENTER  
Level of Service: 5.6, Proposed: 6
- AMPITHEATER  
Level of Service: 5.6, Proposed: 5
- DESTINATION PICNIC/MARKET  
Level of Service: 14, Proposed: 14
- DOG PARK  
Level of Service: 8.4, Proposed: 9



## SUMMARY

	Aquatic Center	Batting Cages	Corporation Yard	District Offices	Site Storage Facilities	Sports Concession	Teen Center	Wellness Center	Ampitheater	Community Center	Spray Park	Destination Picnic\Market Pl	Nat. Turf Ball-Lit	Nat. Turf Soccer- Lit	Skate Park	Syn. Turf Ballfields	Syn. Turf Soccerfields	Universal Play Area	Unlit 220' Ballfield	Unlit Soccer Field	Dog Park
<b>TOTAL ALL AREAS</b>	2.0	6.0	2.0	1.0	8.0	6.0	6.0	3.0	5.0	6.0	14.0	14.0	19.0	1.0	5.5	8.0	6.0	2.0	34.0	55.5	9.0
<b>Adopted Level of Service</b>	2	5.6	1.12	1.1	8.4	5.6	5.6	2.8	5.6	5.6	14	14	22	0	5.6	8.4	5.6	2.8	34	69	8.4
<b>Change from May 31, 2017</b>	0	0	0	0	0	+1	+1	0	0	+1	0	0	+3	0	0	0	+1	0	+8	+15	N/A



## KEY POINTS

---

- The Board has previously provided direction on the Preliminary Plan. Related adjustments have been made.
- CRPD staff will have a tool to communicate with the public, other agencies, and developers.
- This is a PRELIMINARY Plan. It may be updated depending on input received from the public, other agencies, and developers.
- The Preliminary Plan is needed now to coordinate planning in proposed developments.

## NEXT STEPS

---

- Upon approval      Publish document on website
- Summer 2017+      Land use planning tool with developers and agencies
- Summer 2017+      Community outreach concurrent with Measure J
- Late 2017 or 2018      Revise for Board approval based on community input
- 2020+      Master Plan Update after 2020 census