



# Preliminary District-Wide Facilities Distribution Plan

BOARD VISIONING SESSION, MAY 31, 2017

## OBJECTIVES

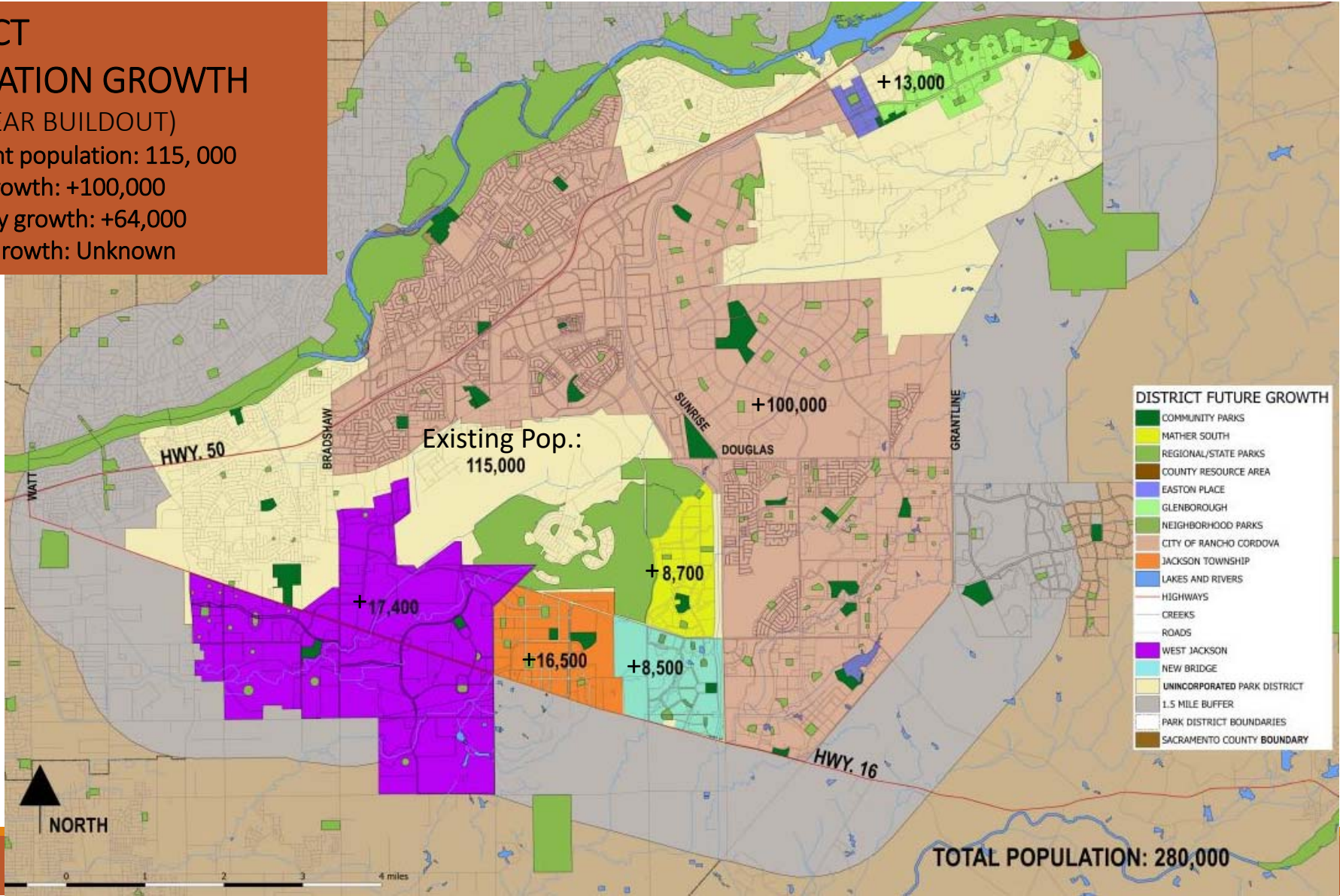
---

- Review Preliminary District-Wide Facility Plan
- Gather Board comments and feedback
- Revise per Board direction
- Seek Board approval on revised Preliminary Plan

# DISTRICT POPULATION GROWTH

(30-40 YEAR BUILDOUT)

- Current population: 115,000
- City growth: +100,000
- County growth: +64,000
- Infill Growth: Unknown

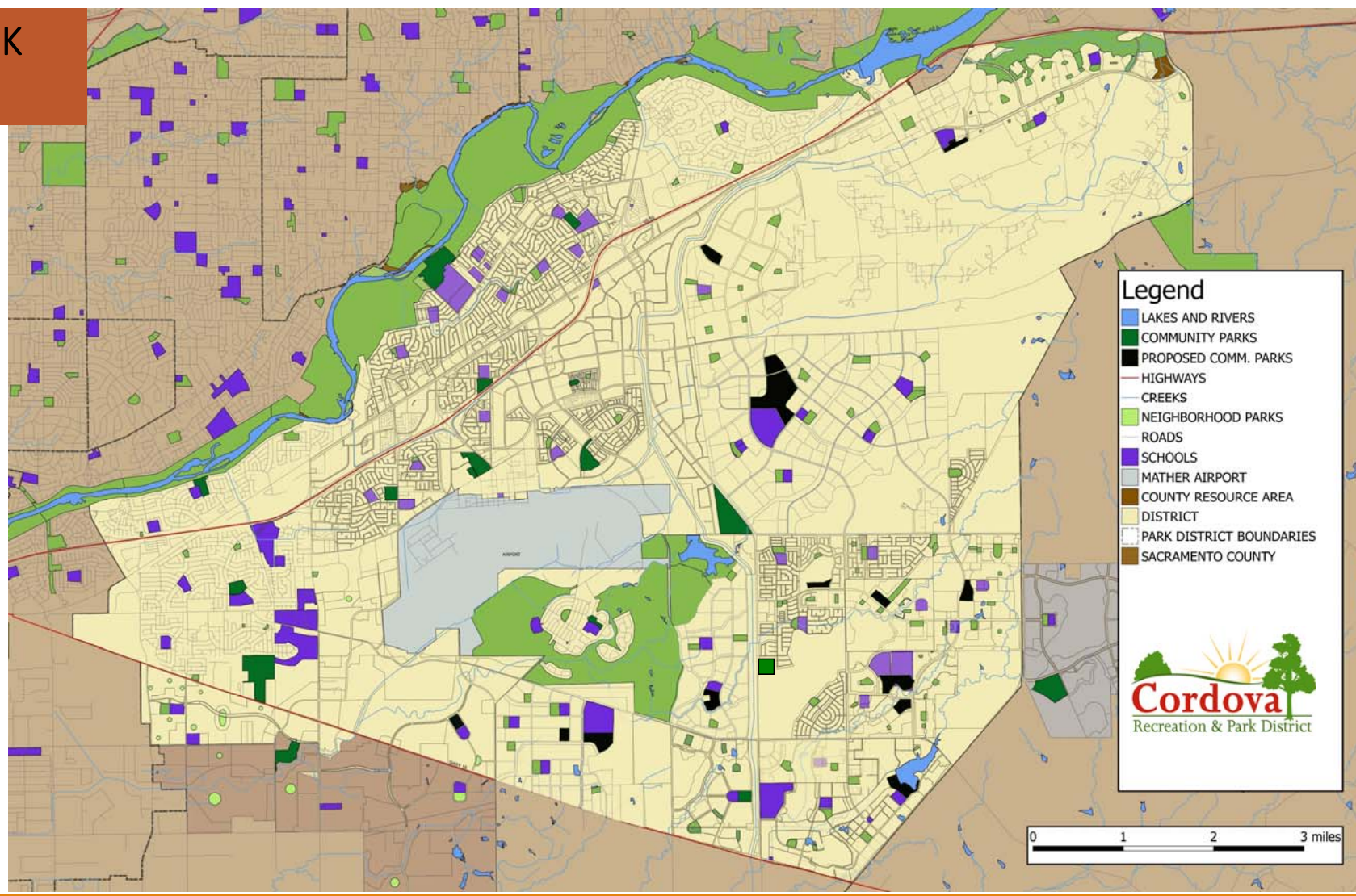




# DISTRICT-WIDE PARK MAP

The Planning staff is looking at the District as a whole to identify best places to locate the District-wide amenities.

This is the final step in a decade long process which included inventory and assessment, capital improvement plan, incorporated area master plan document, and nexus study.



## DISTRICT-WIDE FACILITY

---

Facilities that serve the entire District (or the population of several developments combined), such as: administrative offices, aquatic center, lit ball fields. They are constructed in centralized locations on or near community park property.

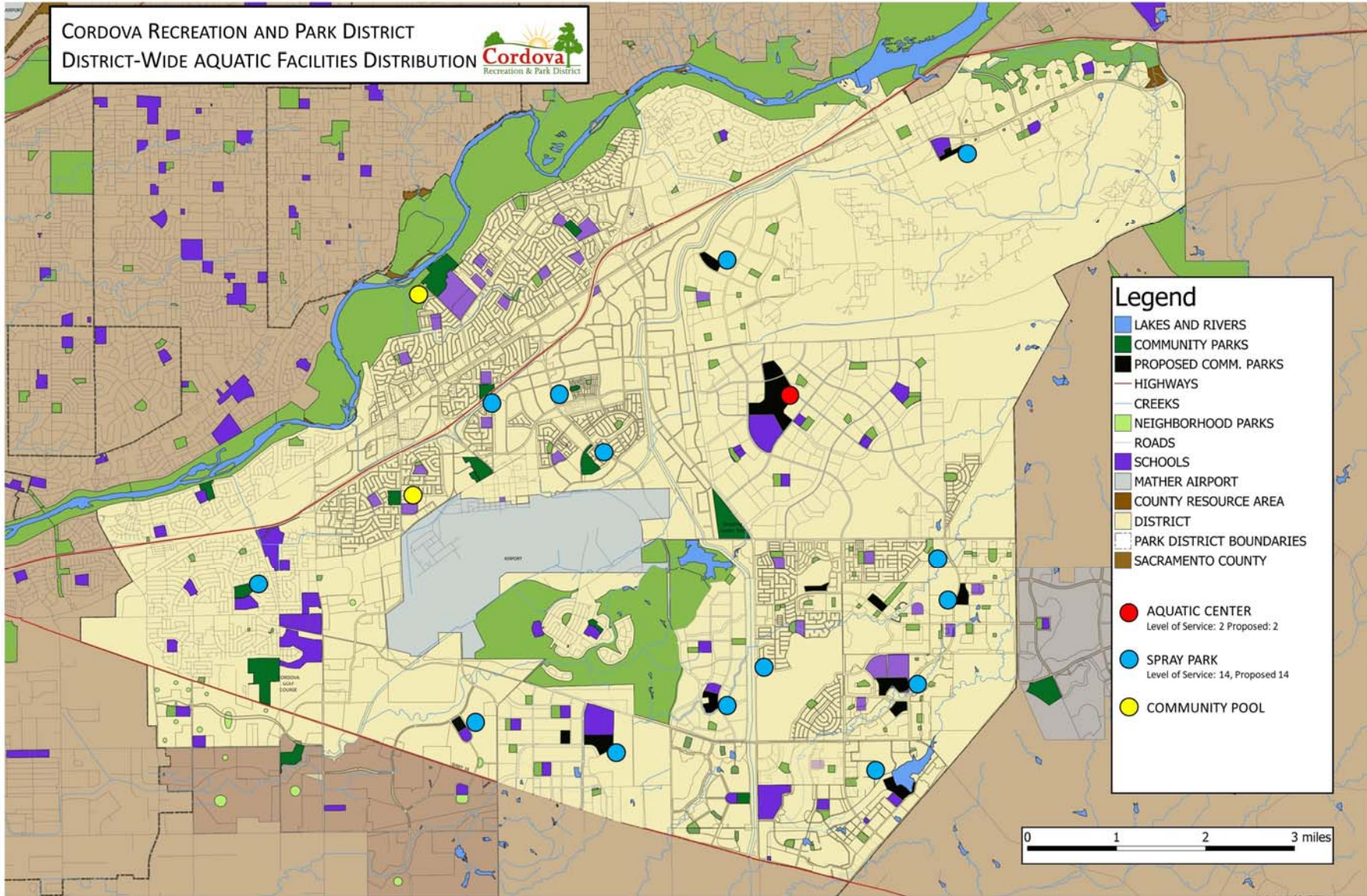
## ACTIVITY FOR BOARD INPUT

---

- Staff will explain each draft map
  - Aquatic facilities
  - Ball fields
  - Soccer fields
  - Community spaces
- Color-coded pens
- Large maps on the wall for written comments (10 – 15 minutes)
- Board questions and comments



CORDOVA RECREATION AND PARK DISTRICT  
 DISTRICT-WIDE AQUATIC FACILITIES DISTRIBUTION



### Legend

- LAKES AND RIVERS
- COMMUNITY PARKS
- PROPOSED COMM. PARKS
- HIGHWAYS
- CREEKS
- NEIGHBORHOOD PARKS
- ROADS
- SCHOOLS
- MATHER AIRPORT
- COUNTY RESOURCE AREA
- DISTRICT
- PARK DISTRICT BOUNDARIES
- SACRAMENTO COUNTY

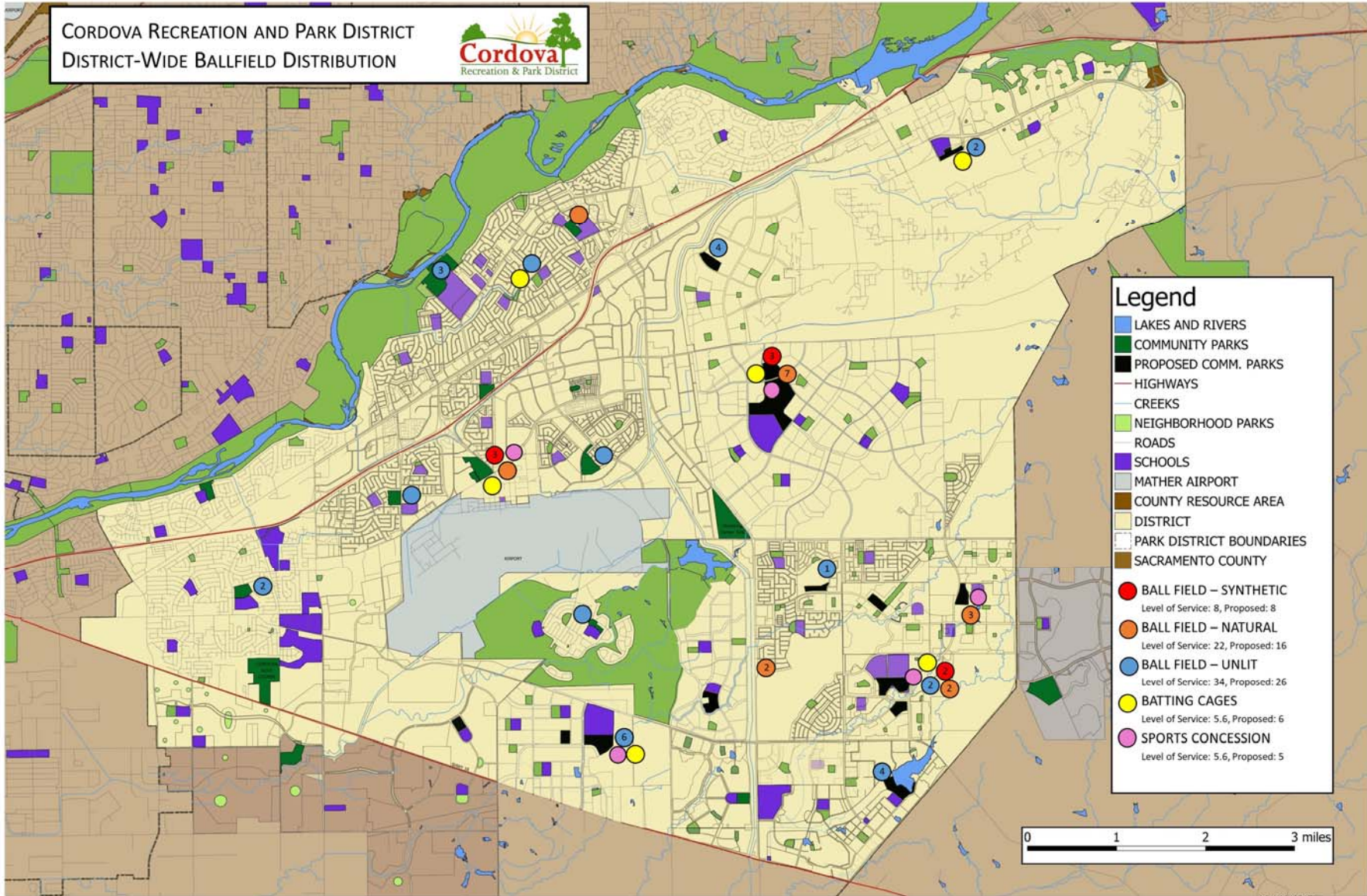
  

- AQUATIC CENTER  
Level of Service: 2 Proposed: 2
- SPRAY PARK  
Level of Service: 14, Proposed 14
- COMMUNITY POOL





**CORDOVA RECREATION AND PARK DISTRICT  
DISTRICT-WIDE BALLFIELD DISTRIBUTION**



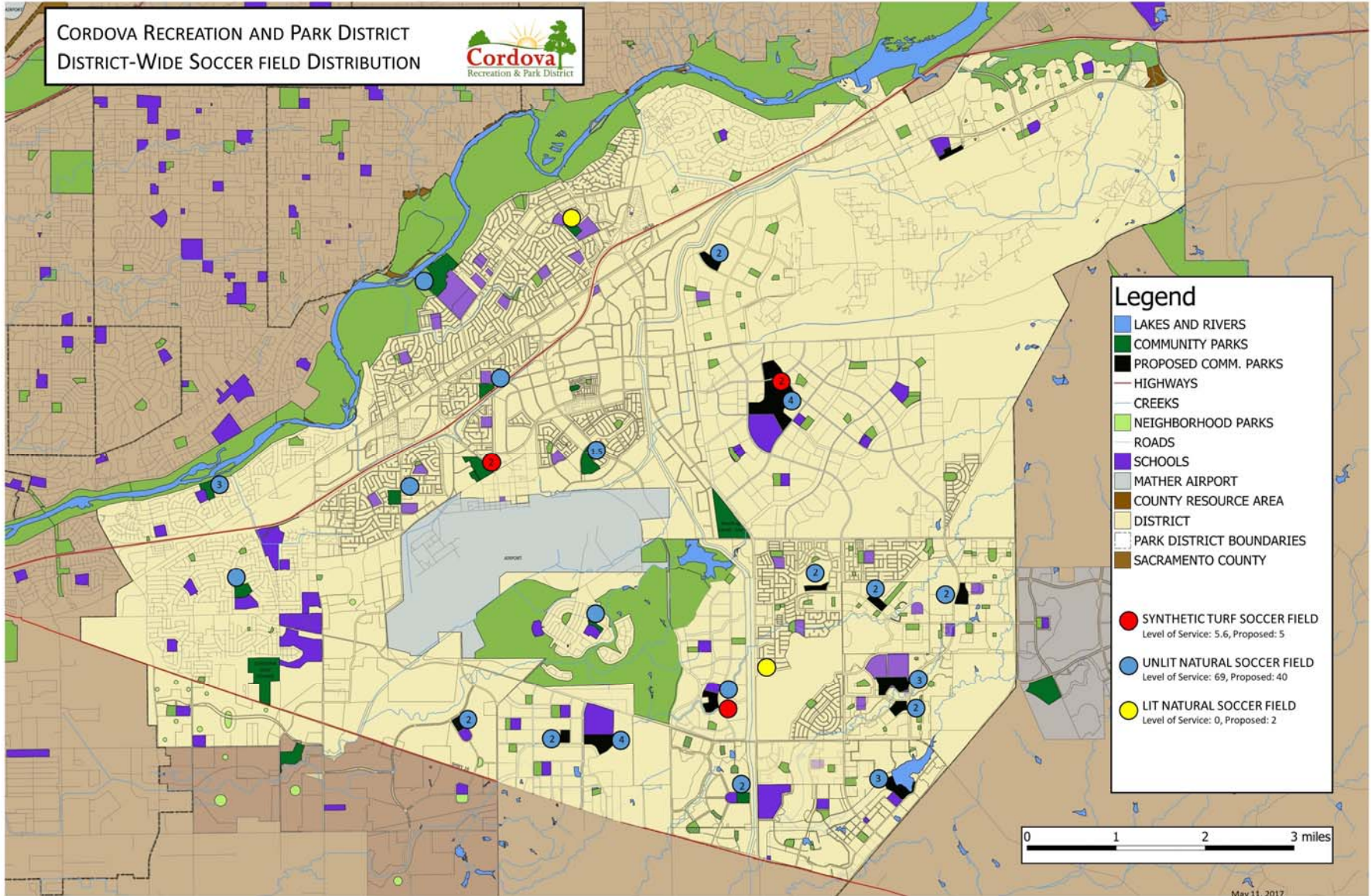
**Legend**

- LAKES AND RIVERS
- COMMUNITY PARKS
- PROPOSED COMM. PARKS
- HIGHWAYS
- CREEKS
- NEIGHBORHOOD PARKS
- ROADS
- SCHOOLS
- MATHER AIRPORT
- COUNTY RESOURCE AREA
- DISTRICT
- ▭ PARK DISTRICT BOUNDARIES
- SACRAMENTO COUNTY
- BALL FIELD – SYNTHETIC  
Level of Service: 8, Proposed: 8
- BALL FIELD – NATURAL  
Level of Service: 22, Proposed: 16
- BALL FIELD – UNLIT  
Level of Service: 34, Proposed: 26
- BATTING CAGES  
Level of Service: 5,6, Proposed: 6
- SPORTS CONCESSION  
Level of Service: 5,6, Proposed: 5





**CORDOVA RECREATION AND PARK DISTRICT  
DISTRICT-WIDE SOCCER FIELD DISTRIBUTION**



**Legend**

- LAKES AND RIVERS
- COMMUNITY PARKS
- PROPOSED COMM. PARKS
- HIGHWAYS
- CREEKS
- NEIGHBORHOOD PARKS
- ROADS
- SCHOOLS
- MATHER AIRPORT
- COUNTY RESOURCE AREA
- DISTRICT
- PARK DISTRICT BOUNDARIES
- SACRAMENTO COUNTY

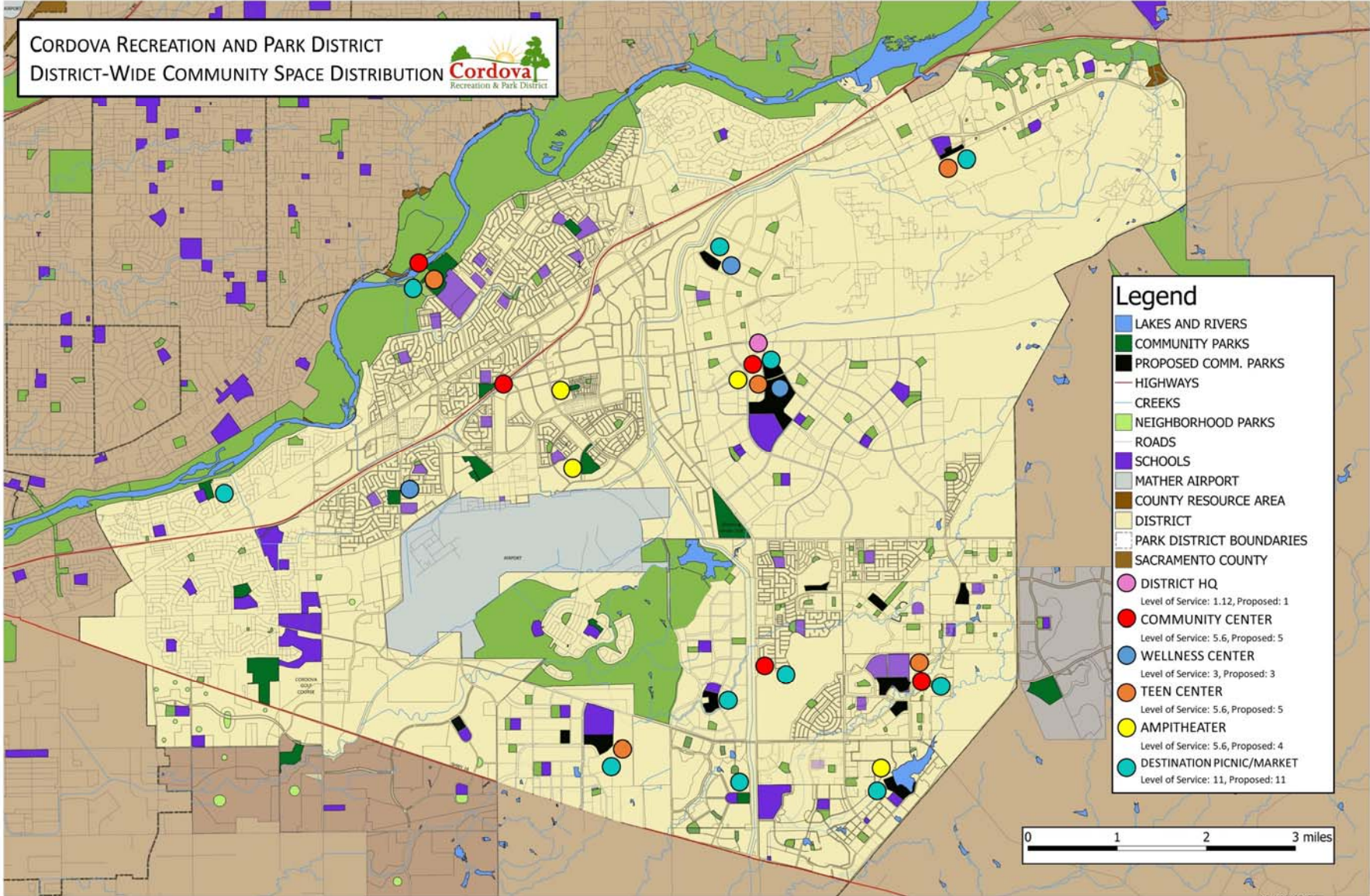
  

- SYNTHETIC TURF SOCCER FIELD  
Level of Service: 5.6, Proposed: 5
- UNLIT NATURAL SOCCER FIELD  
Level of Service: 69, Proposed: 40
- LIT NATURAL SOCCER FIELD  
Level of Service: 0, Proposed: 2





**CORDOVA RECREATION AND PARK DISTRICT  
DISTRICT-WIDE COMMUNITY SPACE DISTRIBUTION**



**Legend**

- LAKES AND RIVERS
- COMMUNITY PARKS
- PROPOSED COMM. PARKS
- HIGHWAYS
- CREEKS
- NEIGHBORHOOD PARKS
- ROADS
- SCHOOLS
- MATHER AIRPORT
- COUNTY RESOURCE AREA
- DISTRICT
- PARK DISTRICT BOUNDARIES
- SACRAMENTO COUNTY
- DISTRICT HQ  
Level of Service: 1.12, Proposed: 1
- COMMUNITY CENTER  
Level of Service: 5.6, Proposed: 5
- WELLNESS CENTER  
Level of Service: 3, Proposed: 3
- TEEN CENTER  
Level of Service: 5.6, Proposed: 5
- AMPITHEATER  
Level of Service: 5.6, Proposed: 4
- DESTINATION PICNIC/MARKET  
Level of Service: 11, Proposed: 11





---

ACTIVITY

DISCUSSION

NEXT STEPS





## NEXT STEPS

---

- May 2017                      Revise plan per Board direction
- June 2017                      Preliminary Plan for Board Action on June 21
- Summer 2017+                Land use planning tool with developers and agencies
- Summer 2017+                Community outreach concurrent with Measure J
- Late 2017 or 2018            Revise for Board approval based on community input
- 2020+                            Master Plan update after 2020 census